

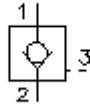
**check valve, screw-in type
pilot operated
POCI-10.-F-0-..**



Symbol:

Nom. pressure:
350 bar

Nominal flow:
70 l/min.



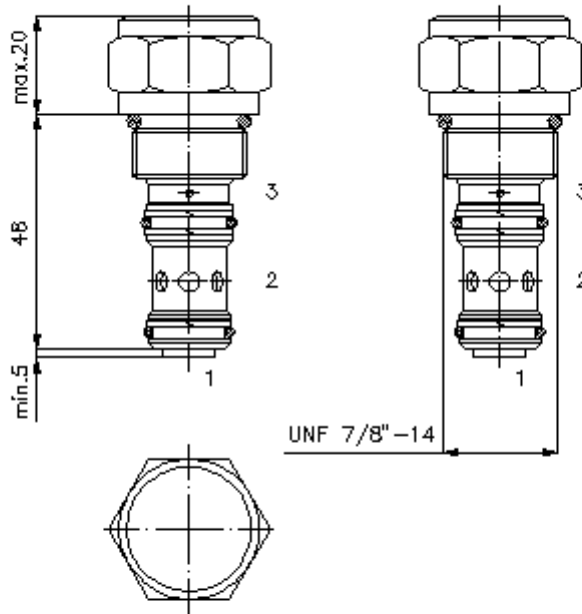
IMAV-Hydraulik GmbH
Breite Strasse 10
D-40670 Meerbusch (Osterath)
Phone +49 (0)2159 - 9188.0
Fax +49 (0)2159 - 4242
E-mail: info@imav.com
Internet: <http://www.imav.com>

CC-210-101-00
(Subject to change!)

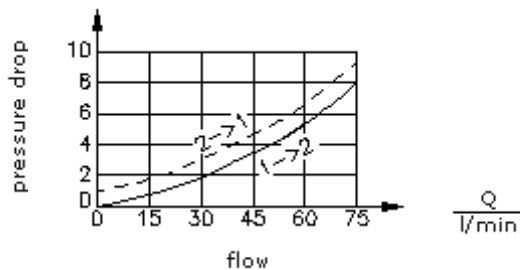
HEX 27mm
(torque
cartridge:
48 - 54 Nm)

cavity:
C-10-3S
see
data-sheet no.:
[IK-200-109-00](#)

Attention:
Please see note at
data-sheet no.:
[IK-200-109-00](#) !



$\frac{\Delta p}{\text{bar}}$ Δp -Q-characteristic
at 28 cSt (50°C)



**check valve, screw-in type
pilot operated
POCI-10.-F-0-..**



IMAV-Hydraulik GmbH
Breite Strasse 10
D-40670 Meerbusch (Osterath)
Phone +49 (0)2159 - 9188.0
Fax +49 (0)2159 - 4242
E-mail: info@imav.com
Internet: <http://www.imav.com>

CC-210-101-00

(Subject to change!)

Ordering example:

POCI - 10N - F - 0 - 10
| | | | |
A **B** **C** **D** **E**

Model code:

- A design**
check valve
pilot operated by hydraulics
pilot ratio 3 : 1
- B size and sealing**
10N = Buna (NBR)
10V = Viton (FPM)

- C adjustment**
F = fixed
- D construction**
0 = screw-in valve
- E crack pressure**
10 = 0.7 bar
30 = 2.1 bar (standard)
60 = 4.1 bar

Technical Data:

- nominal pressure:** 350 bar
- nominal flow:** 70 l/min
- weight:** 0.18 kg
- temperature range:** -40°C to 120°C
- fluids:** hydraulic oil as per DIN 51524 T1 (ISO TC 131)
- max. leakage:** 5 drops/min at 22 cSt (50°C) and 350 bar
- seals:** optional Buna (NBR) or Viton (FPM), as well as Teflon wascher (PTFE)
- cavity:** C-10-3S see datasheet no. [IK-200-109-00](#)
- housing:** 3SLH-10.-B.. see datasheet no. [IH-200-000-00](#)
- seal kit:** SP-CDS-10N-33S (NBR), SP-CDS-10V-33S (FPM)