

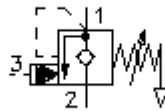
**counterbalance valve, screw-in  
valve (adjustable) vented  
CBPG-12.-.-0-..**



**Symbol:**

**Nom. pressure:**  
350 bar

**Nominal flow:**  
132 l/min.



IMAV-Hydraulik GmbH  
Breite Strasse 10  
D-40670 Meerbusch (Osterath)  
Phone +49 (0)2159 - 9188.0  
Fax +49 (0)2159 - 4242  
E-mail: [info@imav.com](mailto:info@imav.com)  
Internet: <http://www.imav.com>

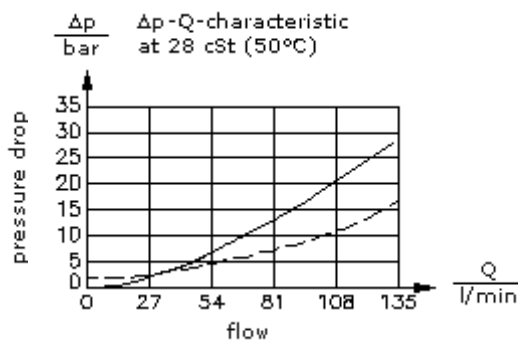
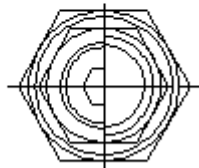
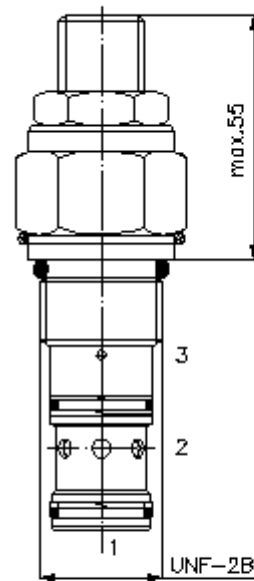
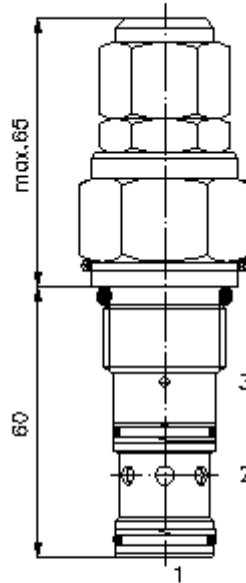
**CC-420-121-00**  
(Subject to change!)

HEX 1"

HEX 1 5/16"  
(torque  
cartridge:  
95 - 100 Nm)

cavity:  
C-12-3S  
see  
data-sheet no.:  
[IK-200-129-00](#)

HEW 8 mm



**counterbalance valve, screw-in  
valve (adjustable) vented  
CBPG-12.-.-0-..**



IMAV-Hydraulik GmbH  
Breite Strasse 10  
D-40670 Meerbusch (Osterath)  
Phone +49 (0)2159 - 9188.0  
Fax +49 (0)2159 - 4242  
E-mail: [info@imav.com](mailto:info@imav.com)  
Internet: <http://www.imav.com>

**CC-420-121-00**

(Subject to change!)

**Ordering example:**

CBPG - 12N - C - 0 - 30  
|        |        |        |        |  
**A**    **B**    **C**    **D**    **E**

**Model code:**

**A design**  
counter balance valve  
adjustable  
pilot ratio 4 : 1  
vented spring

**B size and sealing**  
12N = Buna (NBR)  
12V = Viton (FPM)

**C adjustment**  
S = screw adjustment  
C = cap

**D construction**  
0 = screw-in valve

**E pressure range**  
15 = 3.4 - 105 bar  
30 = 10.3 - 210 bar  
40 = 41.4 - 276 bar

**Technical Data:**

**nominal pressure:** 350 bar  
**nominal flow:** 132 l/min  
**weight:** 0.38 kg  
**temperature range:** -40°C to 120°C  
**fluids:** hydraulic oil as per DIN 51524 T1 (ISO TC 131)  
**max. leakage:** 5 drops/min at 22 cSt (50°C) and approx. 20% below the setted crack pressure  
**seals:** optional Buna (NBR) or Viton (FPM), as well as Teflon wascher (PTFE)  
**crack pressure:** 0.4 - 0.6 bar ( check valve)  
**cavity:** C-12-3S see datasheet no. [IK-200-129-00](#)  
**housing:** 3SLH-12.-B.. see datasheet no. [IH-200-000-00](#)  
**seal kit:** SP-CDS-12N-33S (NBR), SP-CDS-12V-33S (FPM)