

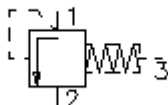
**2 way, 2 position logic valve  
piston-type "A"**  
LCEF-10.-A--0-...



**Symbol:**

**Nom. pressure:**  
350 bar

**Nominal flow:**  
76 l/min.



IMAV-Hydraulik GmbH  
Breite Strasse 10  
D-40670 Meerbusch (Osterath)  
Phone +49 (0)2159 - 9188.0  
Fax +49 (0)2159 - 4242  
E-mail: [info@imav.com](mailto:info@imav.com)  
Internet: <http://www.imav.com>

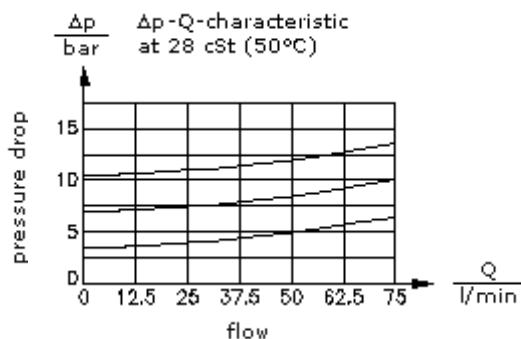
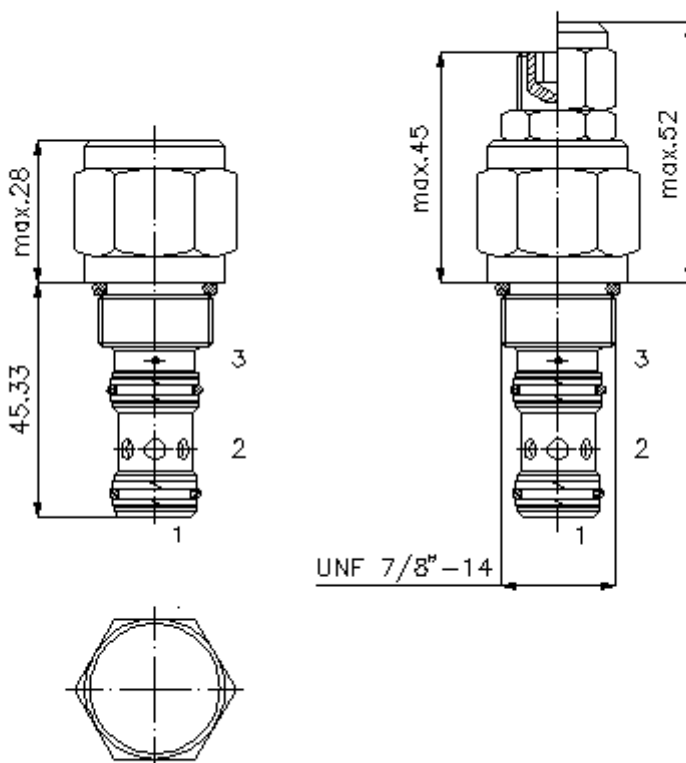
**CD-210-101-00**  
(Subject to change!)

HEX 19 mm

HEX 27 mm  
(torque  
cartridge:  
48 - 54 Nm)

cavity:  
C-10-3S  
see  
data-sheet no.:  
[IK-200-109-00](#)

HEW 8 mm



**2 way, 2 position logic valve  
piston-type "A"  
LCEF-10.-A--0-...**



IMAV-Hydraulik GmbH  
Breite Strasse 10  
D-40670 Meerbusch (Osterath)  
Phone +49 (0)2159 - 9188.0  
Fax +49 (0)2159 - 4242  
E-mail: [info@imav.com](mailto:info@imav.com)  
Internet: <http://www.imav.com>

**Ordering example:**

LCEF - 10N - A - F - 0 - 100  
|        |        |        |        |        |  
**A**    **B**    **C**    **D**    **E**    **F**

**CD-210-101-00**  
(Subject to change!)

**Model code:**

- A design**  
logic valve  
for directional, flow and pressure control  
function
- B size and sealing**  
10N = Buna (NBR)  
10V = Viton (FPM)
- C spool type**  
A = base position normally closed
- D adjustment**  
F = fixed  
S = screw adjustment  
C = cap  
K = handknob

- E construction**  
0 = screw-in valve
- F crack pressure**  
070 = 4.8 bar ("F" only)  
100 = 6.9 bar ("F" only)  
160 = 11.2 bar ("S" only)

**Technical Data:**

**nominal pressure:** 350 bar  
**nominal flow:** 76 l/min  
**weight:** 0.21 kg  
**temperature range:** -40°C to 120°C  
**fluids:** hydraulic oil as per DIN 51524 T1 (ISO TC 131)  
**max. leakage:** 85 ccm/min at 22 cSt (50°C)  
**seals:** optional Buna (NBR) or Viton (FPM), as well as Teflon wascher (PTFE)  
**pilot ratio:** 1 : 1  
**cavity:** C-10-3S see datasheet no. [IK-200-109-00](#)  
**housing:** 3SLH-10.-B.. see datasheet no. [IH-200-000-00](#)  
**seal kit:** SP-CDS-10N-34S (NBR), SP-CDS-10V-34S (FPM)