

2 way press.comp.screw-in valve (fixed)

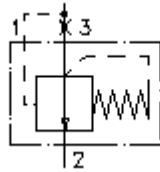
PCEI-10.-F-0-...



Symbol:

Nom. pressure:
350 bar

Nominal flow:
45 l/min.



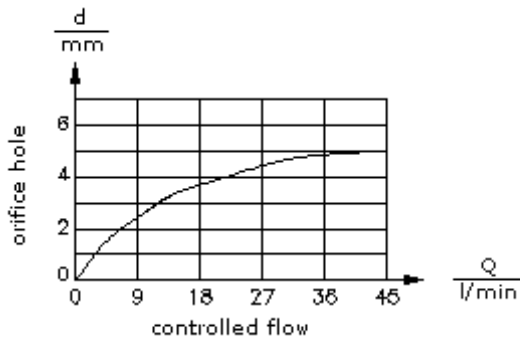
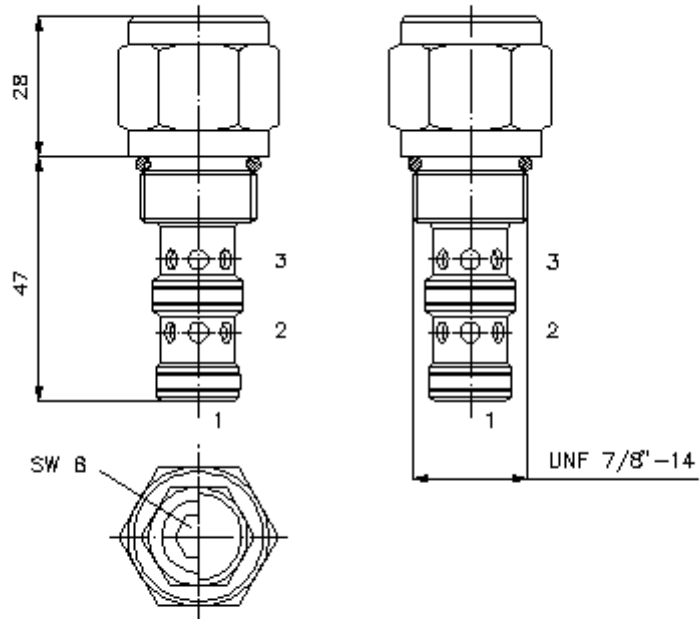
IMAV-Hydraulik GmbH
Breite Strasse 10
D-40670 Meerbusch (Osterath)
Phone +49 (0)2159 - 9188.0
Fax +49 (0)2159 - 4242
E-mail: info@imav.com
Internet: <http://www.imav.com>

CF-500-102-00

(Subject to change!)

HEX 27mm
(torque
cartridge:
48 - 54 Nm)

cavity:
C-10-3
see
data-sheet no.:
[IK-300-109-00](#)



2 way press.comp.screw-in valve (fixed)

PCEI-10.-F-0-...

Ordering example:

PCEI - 10N - F - 0 - 100
| | | | |
A **B** **C** **D** **E**



IMAV-Hydraulik GmbH
Breite Strasse 10
D-40670 Meerbusch (Osterath)
Phone +49 (0)2159 - 9188.0
Fax +49 (0)2159 - 4242
E-mail: info@imav.com
Internet: <http://www.imav.com>

CF-500-102-00

(Subject to change!)

Model code:

A **design**
pressure compensator
pressure compensated

B **size and sealing**
10N = Buna (NBR)
10V = Viton (FPM)

C **adjustment**
F = fixed

D **construction**
0 = screw-in valve

E **differential pressure**
075 = 5.2 bar
100 = 6.9 bar

Technical Data:

nominal pressure: 350 bar
nominal flow: 45 l/min
weight: 0.19 kg
temperature range: -40°C to 120°C
fluids: hydraulic oil as per DIN 51524 T1 (ISO TC 131)
max. leakage: 85 ccm/min at 22 cSt (50°C)
crack pressure: adjustment will be determined at a flow of 0.25 l/min
seals: optional Buna (NBR) or Viton (FPM), as well as Teflon wascher (PTFE)
cavity: C-10-3 see datasheet no. [IK-300-109-00](#)
housing: 3LH-10.-B.. see datasheet no. [IH-300-000-00](#)
seal kit: SP-CDS-10N-12 (NBR), SP-CDS-10V-12 (FPM)