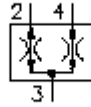


flow divider/combiner screw-in valve
FDCV-10.-0-..



Symbol:



Nom. pressure:
350 bar

Nominal flow:
60 l/min.

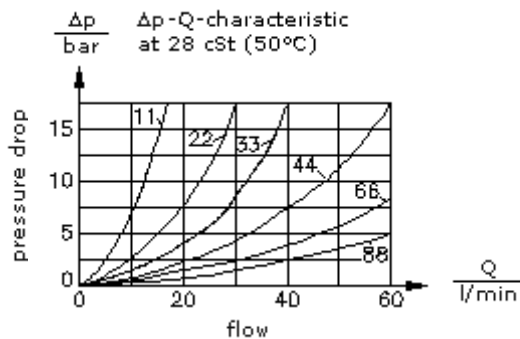
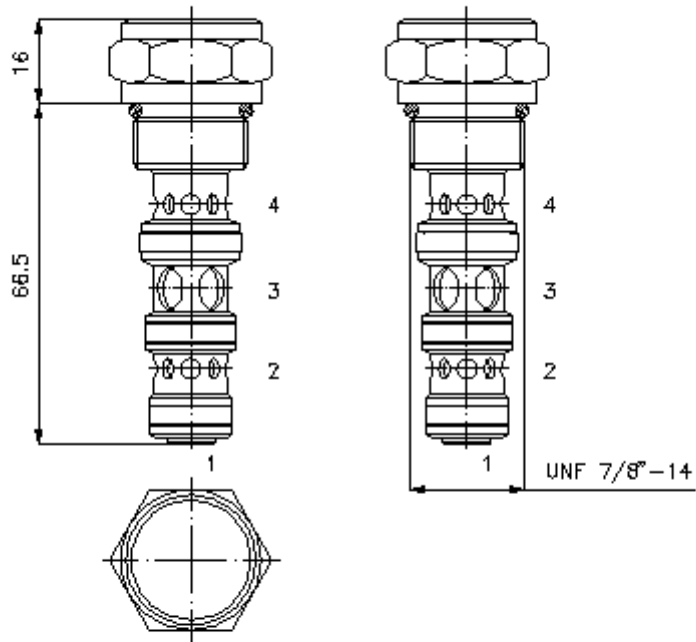


IMAV-Hydraulik GmbH
 Breite Strasse 10
 D-40670 Meerbusch (Osterath)
 Phone +49 (0)2159 - 9188.0
 Fax +49 (0)2159 - 4242
 E-mail: info@imav.com
 Internet: <http://www.imav.com>

CF-610-101-00
 (Subject to change!)

HEX 27mm
 (torque
 cartridge:
 48 - 54 Nm)

cavity: C-10-4
 see
 data-sheet no.:
 IK-400-109-00



flow divider/combiner screw-in valve
FDCV-10.-0-..



IMAV-Hydraulik GmbH
Breite Strasse 10
D-40670 Meerbusch (Osterath)
Phone +49 (0)2159 - 9188.0
Fax +49 (0)2159 - 4242
E-mail: info@imav.com
Internet: <http://www.imav.com>

CF-610-101-00

(Subject to change!)

Ordering example:

FDCV - 10N - 0 - 33
| | | |
A **B** **C** **D**

Model code:

- | | |
|--|--|
| <p>A design
flow divider/combiner
pressure compensated
fixed dividing ratio</p> <p>B size and sealing
10N = Buna (NBR)
10V = Viton (FPM)</p> <p>C construction
0 = screw-in valve</p> | <p>D flow and dividing ratio
port
2 ; 4 ; Q max.
11 = 50.0% ; 50.0% ; 7 l/min
22 = 50.0% ; 50.0% ; 15 l/min
33 = 50.0% ; 50.0% ; 22 l/min
44 = 50.0% ; 50.0% ; 30 l/min
66 = 50.0% ; 50.0% ; 45 l/min
88 = 50.0% ; 50.0% ; 60 l/min
13 = 25.0% ; 75.0% ; 15 l/min
26 = 25.0% ; 75.0% ; 30 l/min
12 = 33.3% ; 66.7% ; 11 l/min
24 = 33.3% ; 66.7% ; 22 l/min
36 = 33.3% ; 66.7% ; 34 l/min
48 = 33.3% ; 66.7% ; 45 l/min</p> |
|--|--|

Technical Data:

- nominal pressure:** 350 bar
- nominal flow:** 60 l/min
- weight:** 0.14 kg
- temperature range:** -40°C to 120°C
- fluids:** hydraulic oil as per DIN 51524 T1 (ISO TC 131)
- dividing accuracy:** 4 - 16 l/min: ± 10.0%
16 - 30 l/min: ± 7.5%
30 - 60 l/min: ± 5.0%
- seals:** optional Buna (NBR) or Viton (FPM), as well as Teflon wascher (PTFE)
- cavity:** C-10-4 see datasheet no. [IK-400-109-00](#) Review note!
- housing:** 4LHS-10.-B.. see datasheet no. [IH-500-000-00](#)
- seal kit:** SP-CDS-10N-13 (NBR), SP-CDS-10V-13 (FPM)