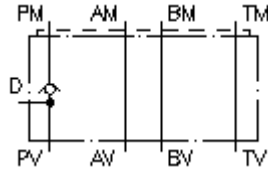


**check valve plate CETOP 3
(sandwich plate) in PD
RZ-06S-PD**



IMAV-Hydraulik GmbH
Breite Strasse 10
D-40670 Meerbusch (Osterath)
Phone +49 (0)2159 - 9188.0
Fax +49 (0)2159 - 4242
E-mail: info@imav.com
Internet: <http://www.imav.com>

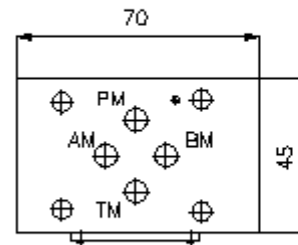
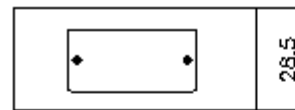
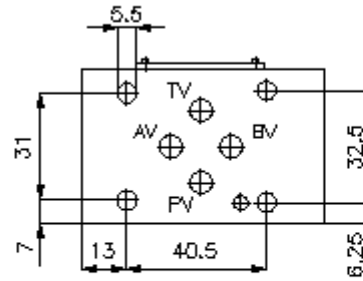
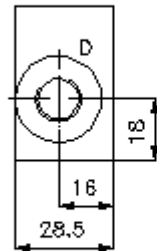
 **Symbol:**



Nom. pressure:
350 bar

Nominal flow:
30 l/min.

IZ-110-201-00
(Subject to change!)



**check valve plate CETOP 3
(sandwich plate) in PD
RZ-06S-PD**



IMAV-Hydraulik GmbH
Breite Strasse 10
D-40670 Meerbusch (Osterath)
Phone +49 (0)2159 - 9188.0
Fax +49 (0)2159 - 4242
E-mail: info@imav.com
Internet: <http://www.imav.com>

IZ-110-201-00

(Subject to change!)

Ordering example:

RZ - 06S - PD
| | |
A **B** **C**

Model code:

A **design**
check valve plate
with mounting interface DIN 24340 form A
sandwichplate design

B **size and material**
06S = steel (9SMnPb28K resp. GGG-40)

C **function mode**
PD = check valve in the "P" channel with
accumulator port

Technical Data:

nominal pressure: 350 bar
nominal flow: 30 l/min
weight: 0.7 kg
crack pressure: 6.0 bar
free flow direction: see symbol
included: DT-06 = sealing plate with vulcanized O-ring (Viton FPM)