

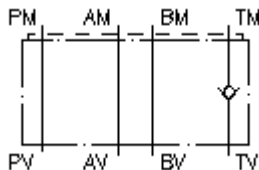
**check valve plate CETOP 3  
(sandwich plate) in T  
RZ-06S-T**



**Symbol:**

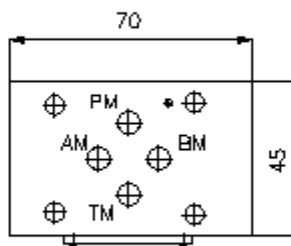
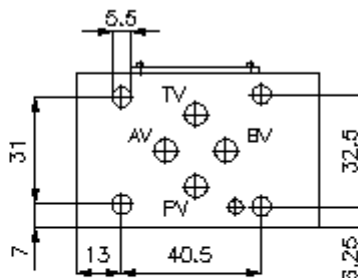
**Nom. pressure:**  
350 bar

**Nominal flow:**  
30 l/min.



IMAV-Hydraulik GmbH  
Breite Strasse 10  
D-40670 Meerbusch (Osterath)  
Phone +49 (0)2159 - 9188.0  
Fax +49 (0)2159 - 4242  
E-mail: [info@imav.com](mailto:info@imav.com)  
Internet: <http://www.imav.com>

**IZ-110-202-00**  
(Subject to change!)



**check valve plate CETOP 3  
(sandwich plate) in T  
RZ-06S-T**



IMAV-Hydraulik GmbH  
Breite Strasse 10  
D-40670 Meerbusch (Osterath)  
Phone +49 (0)2159 - 9188.0  
Fax +49 (0)2159 - 4242  
E-mail: [info@imav.com](mailto:info@imav.com)  
Internet: <http://www.imav.com>

**IZ-110-202-00**

(Subject to change!)

**Ordering example:**

RZ   - 06S - T  
|        |        |  
**A**    **B**    **C**

**Model code:**

- |   |   |
|---|---|
| <p><b>A</b> <b>design</b><br/>check valve plate<br/>with mounting interface DIN 24340 form A<br/>sandwichplate design</p> | <p><b>B</b> <b>size and material</b><br/>06S = steel (9SMnPb28K resp. GGG-40)</p> <p><b>C</b> <b>function mode</b><br/>T = check valve in the "T" channel</p> |
|---|---|

**Technical Data:**

<b>nominal pressure:</b>	350 bar
<b>nominal flow:</b>	30 l/min
<b>weight:</b>	0.5 kg
<b>crack pressure:</b>	0.2 - 0.3 bar (standard), higher pressure on request
<b>free flow direction:</b>	see symbol
<b>included:</b>	DT-06 = sealing plate with vulcanized O-ring (Viton FPM)