

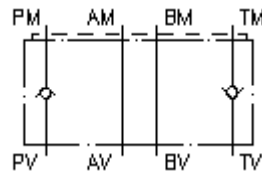
**check valve plate CETOP 3
(sandwich plate) in P+T
RZ-06S-P+T**



Symbol:

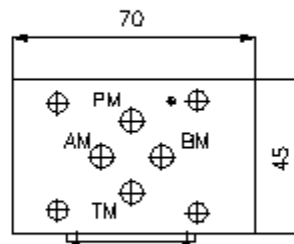
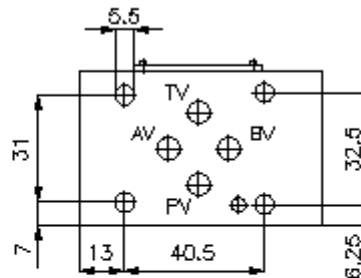
Nom. pressure:
350 bar

Nominal flow:
30 l/min.



IMAV-Hydraulik GmbH
Breite Strasse 10
D-40670 Meerbusch (Osterath)
Phone +49 (0)2159 - 9188.0
Fax +49 (0)2159 - 4242
E-mail: info@imav.com
Internet: <http://www.imav.com>

IZ-110-203-00
(Subject to change!)



**check valve plate CETOP 3
(sandwich plate) in P+T
RZ-06S-P+T**



IMAV-Hydraulik GmbH
Breite Strasse 10
D-40670 Meerbusch (Osterath)
Phone +49 (0)2159 - 9188.0
Fax +49 (0)2159 - 4242
E-mail: info@imav.com
Internet: <http://www.imav.com>

IZ-110-203-00

(Subject to change!)

Ordering example:

RZ - 06S - P+T
| | |
A **B** **C**

Model code:

- | | |
|---|---|
| <p>A design
check valve plate
with mounting interface DIN 24340 form A
sandwichplate design</p> | <p>B size and material
06S = steel (9SMnPb28K resp. GGG-40)</p> <p>C function mode
P+T = check valve in the "T" channel</p> |
|---|---|

Technical Data:

nominal pressure:	350 bar
nominal flow:	30 l/min
weight:	0.5 kg
crack pressure:	0.2 - 0.3 bar (standard), higher pressure on request
free flow direction:	see symbol
included:	DT-06 = sealing plate with vulcanized O-ring (Viton FPM)