

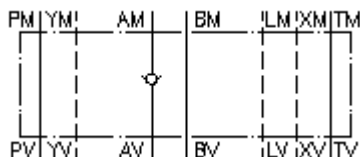
**check valve plate CETOP 7
(sandwich plate) in A
RVZ-16S-A**



Symbol:

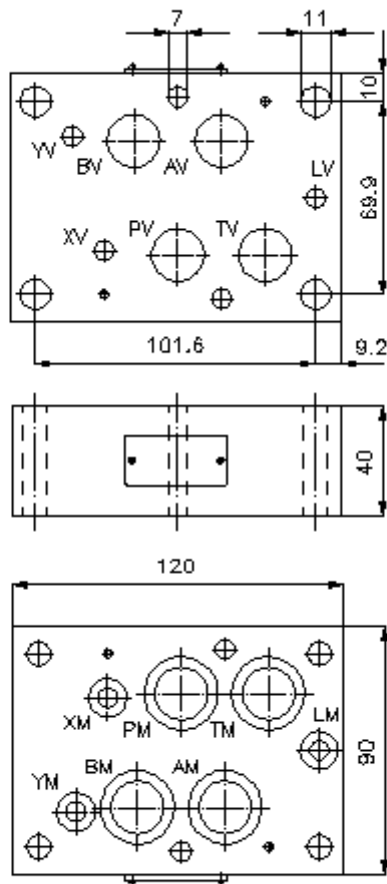
Nom. pressure:
350 bar

Nominal flow:
140 l/min.



IMAV-Hydraulik GmbH
Breite Strasse 10
D-40670 Meerbusch (Osterath)
Phone +49 (0)2159 - 9188.0
Fax +49 (0)2159 - 4242
E-mail: info@imav.com
Internet: <http://www.imav.com>

IZ-110-502-00
(Subject to change!)



**check valve plate CETOP 7
(sandwich plate) in A
RVZ-16S-A**



IMAV-Hydraulik GmbH
Breite Strasse 10
D-40670 Meerbusch (Osterath)
Phone +49 (0)2159 - 9188.0
Fax +49 (0)2159 - 4242
E-mail: info@imav.com
Internet: <http://www.imav.com>

IZ-110-502-00

(Subject to change!)

Ordering example:

RVZ - 16S - A
| | |
A **B** **C**

Model code:

- | | |
|---|---|
| <p>A design
check valve plate
with mounting interface DIN 24340 form A
sandwichplate design</p> | <p>B size and material
16S = steel (9SMnPb28K resp. GGG-40)</p> <p>C function mode
A = check valve in the "A" channel</p> |
|---|---|

Technical Data:

- | | |
|-----------------------------|---|
| nominal pressure: | 350 bar |
| nominal flow: | 140 l/min |
| weight: | 2.7 kg |
| crack pressure: | 0.2 - 0.3 bar (standard), higher pressure on request |
| free flow direction: | see symbol |
| included: | 3 pcs. O-Ring 22.22 x 2.62
3 pcs. O-Ring 9.19 x 2.62
2 pcs. O-Ring 25.00 x 2.50 |