

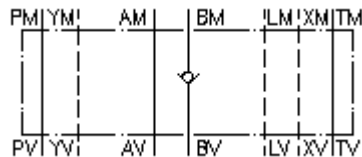
**check valve plate CETOP 7
(sandwich plate) in B
RVZ-16S-B**



Symbol:

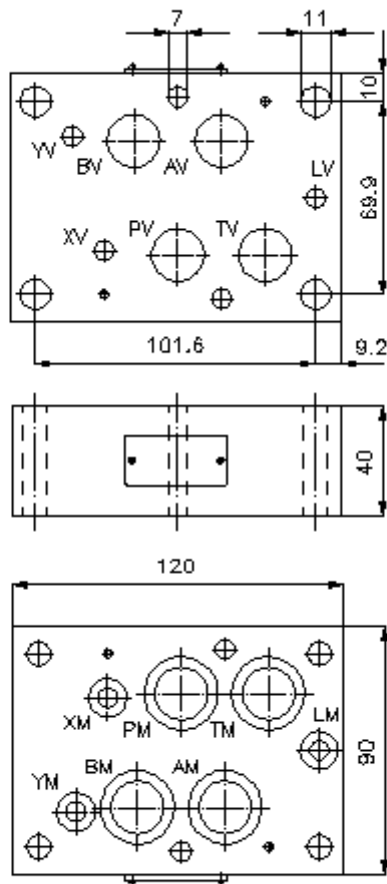
Nom. pressure:
350 bar

Nominal flow:
140 l/min.



IMAV-Hydraulik GmbH
Breite Strasse 10
D-40670 Meerbusch (Osterath)
Phone +49 (0)2159 - 9188.0
Fax +49 (0)2159 - 4242
E-mail: info@imav.com
Internet: <http://www.imav.com>

IZ-110-503-00
(Subject to change!)



**check valve plate CETOP 7
(sandwich plate) in B
RVZ-16S-B**



IMAV-Hydraulik GmbH
Breite Strasse 10
D-40670 Meerbusch (Osterath)
Phone +49 (0)2159 - 9188.0
Fax +49 (0)2159 - 4242
E-mail: info@imav.com
Internet: <http://www.imav.com>

IZ-110-503-00

(Subject to change!)

Ordering example:

RVZ - 16S - B
| | |
A **B** **C**

Model code:

A **design**
check valve plate
with mounting interface DIN 24340 form A
sandwichplate design

B **size and material**
16S = steel (9SMnPb28K resp. GGG-40)

C **function mode**
B = check valve in the "B" channel

Technical Data:

nominal pressure: 350 bar
nominal flow: 140 l/min
weight: 2.7 kg
crack pressure: 0.2 - 0.3 bar (standard), higher pressure on request
free flow direction: see symbol
included: 3 pcs. O-Ring 22.22 x 2.62
3 pcs. O-Ring 9.19 x 2.62
2 pcs. O-Ring 25.00 x 2.50