

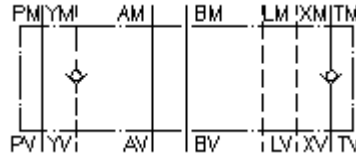
**check valve plate CETOP 8
(sandwich plate) in T+Y
RVZ-25A-T+Y**



Symbol:

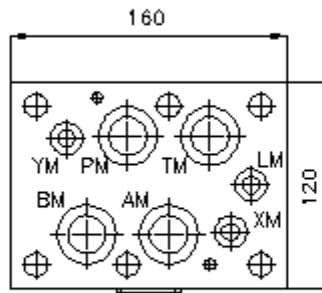
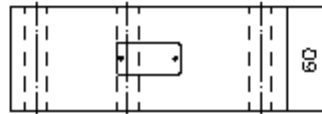
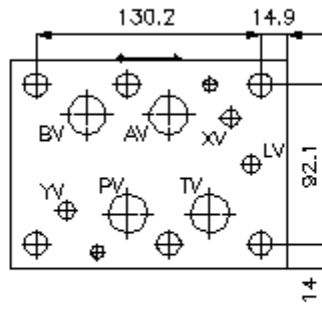
Nom. pressure:
250 bar

Nominal flow:
240 l/min.



IMAV-Hydraulik GmbH
Breite Strasse 10
D-40670 Meerbusch (Osterath)
Phone +49 (0)2159 - 9188.0
Fax +49 (0)2159 - 4242
E-mail: info@imav.com
Internet: <http://www.imav.com>

IZ-110-602-00
(Subject to change!)



**check valve plate CETOP 8
(sandwich plate) in T+Y
RVZ-25A-T+Y**



IMAV-Hydraulik GmbH
Breite Strasse 10
D-40670 Meerbusch (Osterath)
Phone +49 (0)2159 - 9188.0
Fax +49 (0)2159 - 4242
E-mail: info@imav.com
Internet: <http://www.imav.com>

IZ-110-602-00

(Subject to change!)

Ordering example:

RVZ - 25A - T+Y
| | |
A **B** **C**

Model code:

- | | |
|---|---|
| <p>A design check valve plate with mounting interface DIN 24340 form A sandwichplate design</p> | <p>B size and material 25A = aluminum (F37)</p> <p>C function mode T+Y = check valve in the "T+Y" channel</p> |
|---|---|

Technical Data:

| | |
|-----------------------------|--|
| nominal pressure: | 250 bar |
| nominal flow: | 240 l/min |
| weight: | 3.2 kg |
| crack pressure: | 0.2 - 0.3 bar (standard), higher pressure on request |
| free flow direction: | see symbol |
| included: | 3 pcs. O-Ring 28.17 x 3.53 2 pcs. O-Ring 14.00 x 2.65 3 pcs. O-Ring 34.00 x 2.50 2 pcs. O-Ring 16.00 x 1.50 |