

**check valve plate CETOP 3
(sandwich plate) in P w.port in D
RCZ-06S-PD**

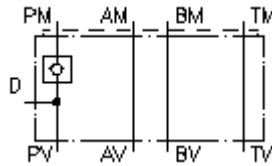


IMAV-Hydraulik GmbH
Breite Strasse 10
D-40670 Meerbusch (Osterath)
Phone +49 (0)2159 - 9188.0
Fax +49 (0)2159 - 4242
E-mail: info@imav.com
Internet: <http://www.imav.com>

 **Symbol:**

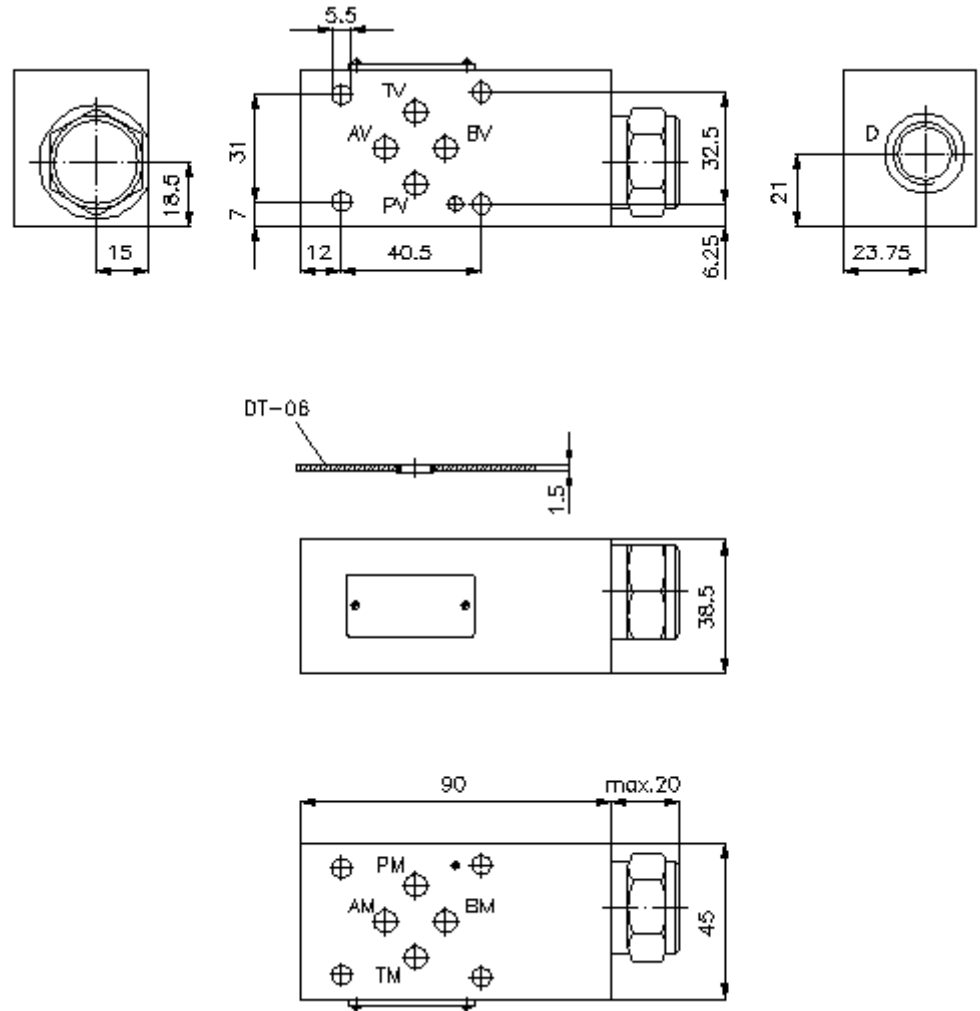
Nom. pressure:
350 bar

Nominal flow:
60 l/min.



IZ-120-250-00

(Subject to change!)



**check valve plate CETOP 3
(sandwich plate) in P w.port in D
RCZ-06S-PD**



IMAV-Hydraulik GmbH
Breite Strasse 10
D-40670 Meerbusch (Osterath)
Phone +49 (0)2159 - 9188.0
Fax +49 (0)2159 - 4242
E-mail: info@imav.com
Internet: <http://www.imav.com>

IZ-120-250-00

(Subject to change!)

Ordering example:

RCZ - 06S - PD
| | |
A **B** **C**

Model code:

A design
check valve plate
with mounting interface DIN 24340 form A
sandwichplate design

B size and material
06S = steel (9SMnPb28K resp. GGG-40)

C function mode
PD = check valve in the "P" channel with
accumulator port

Technical Data:

nominal pressure: 350 bar
nominal flow: 60 l/min
weight: 1.3 kg
crack pressure: approx. 1.0 bar (standard), other pressure on request
free flow direction: see symbol
check valve: CVFP-10.-0-.. see datasheet no. [CC-110-101-00](#)
included: DT-06 = sealing plate with vulcanized O-ring (Viton FPM)