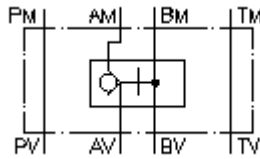


**pilot op. check valve CETOP 3  
(sandwich plate) in A  
RHEZ-06S-A**



IMAV-Hydraulik GmbH  
Breite Strasse 10  
D-40670 Meerbusch (Osterath)  
Phone +49 (0)2159 - 9188.0  
Fax +49 (0)2159 - 4242  
E-mail: [info@imav.com](mailto:info@imav.com)  
Internet: <http://www.imav.com>

 **Symbol:**

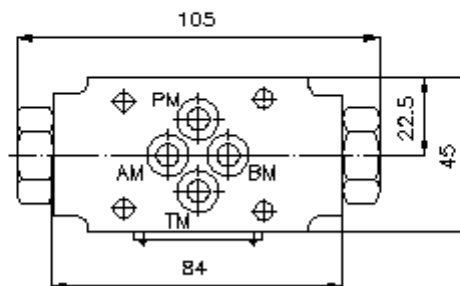
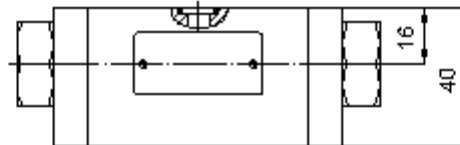
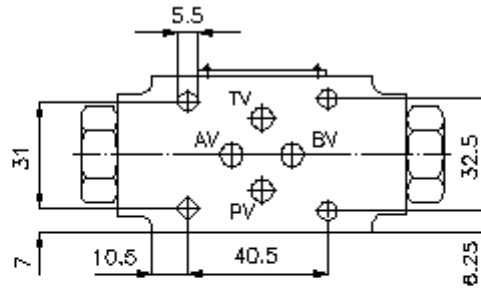


**Nom. pressure:**  
320 bar

**Nominal flow:**  
60 l/min.

**IZ-130-200-00**

(Subject to change!)



**pilot op. check valve CETOP 3  
(sandwich plate) in A  
RHEZ-06S-A**



IMAV-Hydraulik GmbH  
Breite Strasse 10  
D-40670 Meerbusch (Osterath)  
Phone +49 (0)2159 - 9188.0  
Fax +49 (0)2159 - 4242  
E-mail: [info@imav.com](mailto:info@imav.com)  
Internet: <http://www.imav.com>

**IZ-130-200-00**

(Subject to change!)

**Ordering example:**

RHEZ - 06S - A  
|            |            |  
**A**        **B**        **C**

**Model code:**

**A design**  
pilot operated check valve  
with mounting interface DIN 24340 form A  
sandwichplate design

**B size and material**  
06S = steel (9SMnPb28K resp. GGG-40)

**C function mode**  
A = check valve in the "A" channel

**Technical Data:**

**nominal pressure:** 320 bar  
**nominal flow:** 60 l/min  
**weight:** 1. 1 kg  
**temperature range:** -20°C till 70°C  
**fluids:** hydraulic oil as per DIN 51524 T1 (ISO TC 131)  
**seals:** optional Buna (NBR) or Viton (FPM)  
**included:** included  
3 pcs. O-Ring 9.25 x 1.78  
**pilot ratio:** approx. 1 : 3  
**crack pressure:** 2.5 bar (other crack pressure on request)