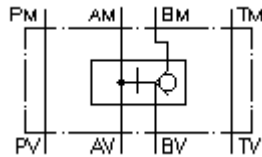


**pilot op. check valve CETOP 5  
(sandwich plate) in A  
KR-013**



IMAV-Hydraulik GmbH  
Breite Strasse 10  
D-40670 Meerbusch (Osterath)  
Phone +49 (0)2159 - 9188.0  
Fax +49 (0)2159 - 4242  
E-mail: [info@imav.com](mailto:info@imav.com)  
Internet: <http://www.imav.com>

 **Symbol:**

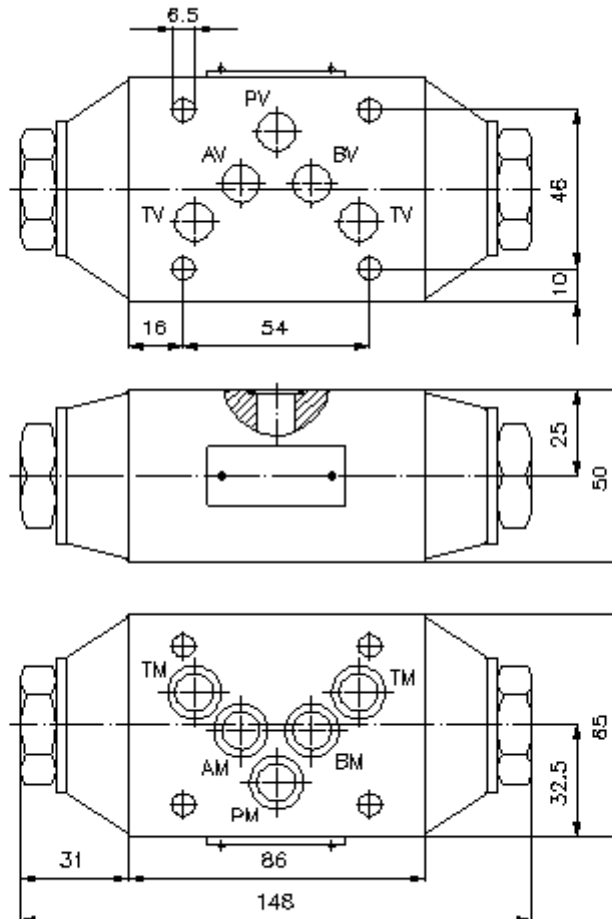


**Nom. pressure:**  
350 bar

**Nominal flow:**  
100 l/min.

**IZ-130-401-00**

(Subject to change!)



**pilot op. check valve CETOP 5  
(sandwich plate) in A  
KR-013**



IMAV-Hydraulik GmbH  
Breite Strasse 10  
D-40670 Meerbusch (Osterath)  
Phone +49 (0)2159 - 9188.0  
Fax +49 (0)2159 - 4242  
E-mail: [info@imav.com](mailto:info@imav.com)  
Internet: <http://www.imav.com>

**IZ-130-401-00**  
(Subject to change!)

**Ordering example:**

KR    -    013  
|        |  
**A**     **B**

**Model code:**

**A** **design**  
pilot operated check valve  
with mounting interface DIN 24340 form A  
sandwichplate design

**B** **function mode**  
013 = shuttle valve in the "A" channel

**Technical Data:**

**nominal pressure:** 350 bar  
**nominal flow:** 100 l/min  
**weight:** 2.9 kg  
**temperature range:** -20°C till 70°C  
**fluids:** hydraulic oil as per DIN 51524 T1 (ISO TC 131)  
**seals:** optional Buna (NBR) or Viton (FPM)  
**included:** included:  
5 pcs. O-ring 12.42 x 1.78  
**pilot ratio:** approx. 1 : 3.4  
**crack pressure:** 1 bar (other crack pressure on request)