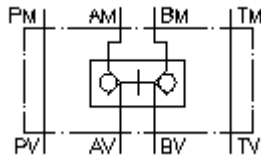


**pilot op. check valve CETOP 5
(sandwich plate) in B
KR-014**



Symbol:



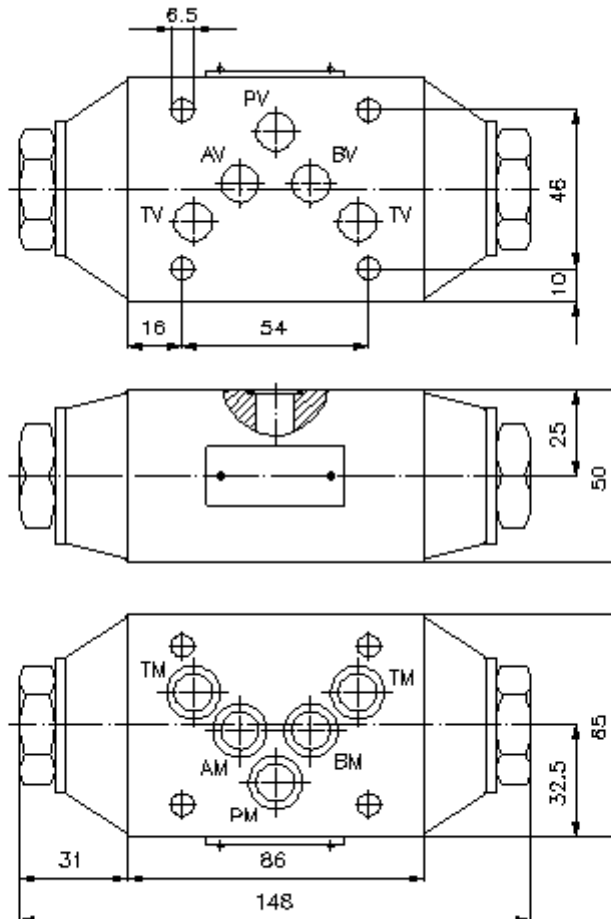
Nom. pressure:
350 bar

Nominal flow:
100 l/min.



IMAV-Hydraulik GmbH
Breite Strasse 10
D-40670 Meerbusch (Osterath)
Phone +49 (0)2159 - 9188.0
Fax +49 (0)2159 - 4242
E-mail: info@imav.com
Internet: <http://www.imav.com>

IZ-130-402-00
(Subject to change!)



**pilot op. check valve CETOP 5
(sandwich plate) in B
KR-014**



IMAV-Hydraulik GmbH
Breite Strasse 10
D-40670 Meerbusch (Osterath)
Phone +49 (0)2159 - 9188.0
Fax +49 (0)2159 - 4242
E-mail: info@imav.com
Internet: <http://www.imav.com>

IZ-130-402-00
(Subject to change!)

Ordering example:

KR - 014
| |
A **B**

Model code:

A **design**
pilot operated check valve
with mounting interface DIN 24340 form A
sandwichplate design

B **function mode**
014 = shuttle valve in the "A+B" channel

Technical Data:

nominal pressure: 350 bar
nominal flow: 100 l/min
weight: 2.9 kg
temperature range: -20°C till 70°C
fluids: hydraulic oil as per DIN 51524 T1 (ISO TC 131)
seals: optional Buna (NBR) or Viton (FPM)
included: included:
5 pcs. O-ring 12.42 x 1.78
pilot ratio: approx. 1 : 3.4
crack pressure: 1 bar (other crack prack pressure on request)