

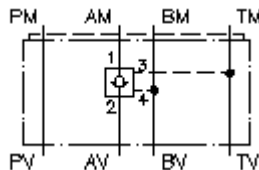
**pilot op. check valve CETOP 3
(sandwich plate) in A (vented to T)
RHEVZ-06S-A/..**



Symbol:

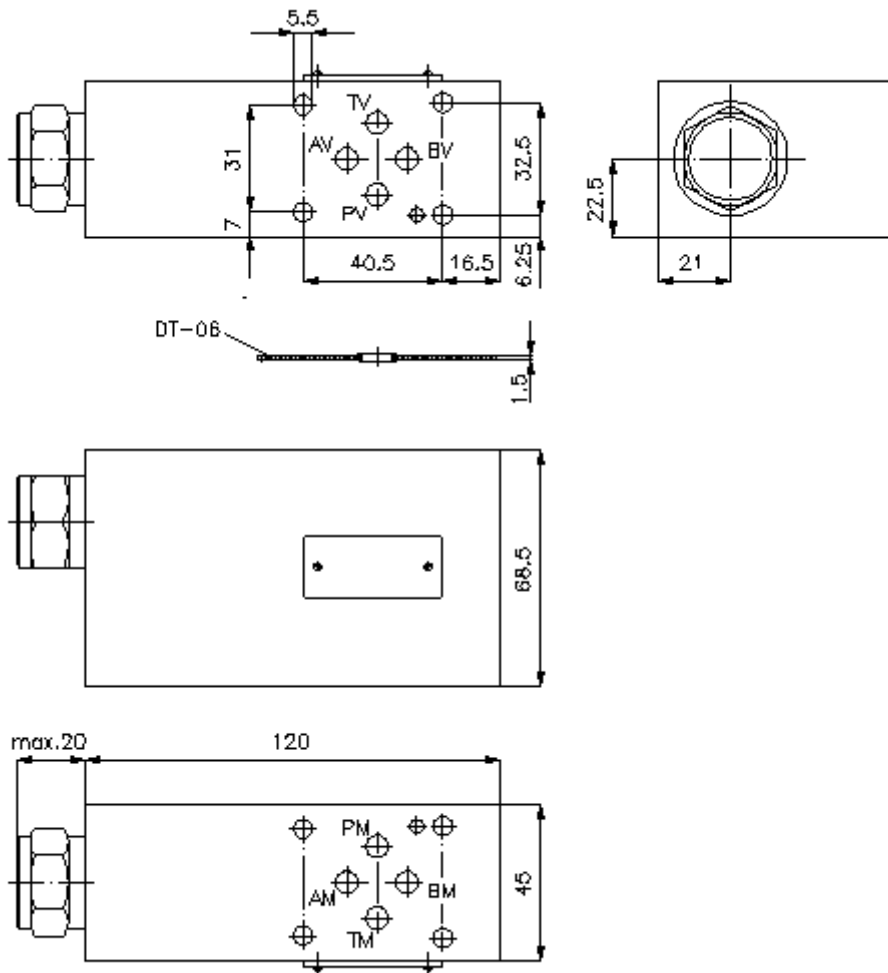
Nom. pressure:
350 bar

Nominal flow:
60 l/min.



IMAV-Hydraulik GmbH
Breite Strasse 10
D-40670 Meerbusch (Osterath)
Phone +49 (0)2159 - 9188.0
Fax +49 (0)2159 - 4242
E-mail: info@imav.com
Internet: <http://www.imav.com>

IZ-135-250-00
(Subject to change!)



**pilot op. check valve CETOP 3
(sandwich plate) in A (vented to T)
RHEVZ-06S-A/..**



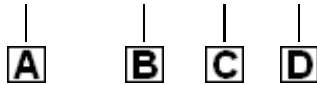
IMAV-Hydraulik GmbH
Breite Strasse 10
D-40670 Meerbusch (Osterath)
Phone +49 (0)2159 - 9188.0
Fax +49 (0)2159 - 4242
E-mail: info@imav.com
Internet: <http://www.imav.com>

IZ-135-250-00

(Subject to change!)

Ordering example:

RHEVZ - 06S - A / 30



Model code:

A design
pilot operated check valve
with mounting interface DIN 24340 form A
sandwichplate design
vented spring

B size and material
06S = steel (9SMnPb28K resp. GGG-40)

C function mode
A = in A acting

**D pilot operated check valve free flow
crack pressure POCV-10.-..**
10 = 0.7 bar
30 = 2.1 bar
60 = 4.1 bar

Technical Data:

nominal pressure:	350 bar
nominal flow:	60 l/min
weight:	2.9 kg
check valve:	POCV-10.- see datasheet no.: CC-220-101-00
free flow direction:	see symbol
included:	DT-06 = sealing plate with vulcanized O-ring (Viton FPM)