

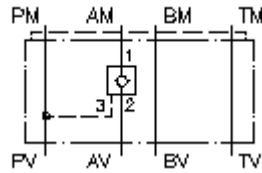
**pilot op.check valve from P CETOP 3
(sandwich plate) in A
REMZ-06A-A/...**



Symbol:

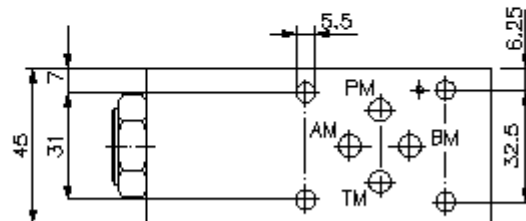
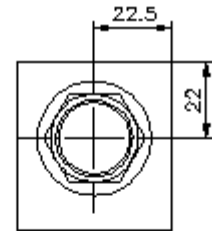
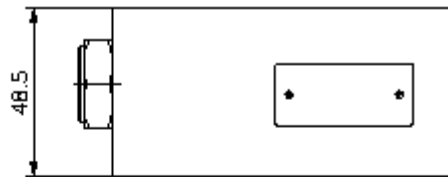
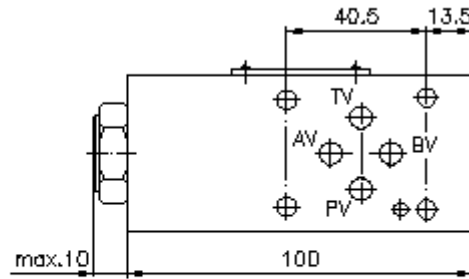
Nom. pressure:
250 bar

Nominal flow:
60 l/min.



IMAV-Hydraulik GmbH
Breite Strasse 10
D-40670 Meerbusch (Osterath)
Phone +49 (0)2159 - 9188.0
Fax +49 (0)2159 - 4242
E-mail: info@imav.com
Internet: <http://www.imav.com>

IZ-140-200-00
(Subject to change!)



**pilot op.check valve from P CETOP 3
(sandwich plate) in A
REMZ-06A-A/...**



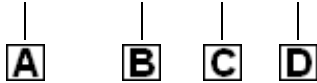
IMAV-Hydraulik GmbH
Breite Strasse 10
D-40670 Meerbusch (Osterath)
Phone +49 (0)2159 - 9188.0
Fax +49 (0)2159 - 4242
E-mail: info@imav.com
Internet: <http://www.imav.com>

IZ-140-200-00

(Subject to change!)

Ordering example:

REMZ - 06A - A / 030



Model code:

- | | |
|---|--|
| <p>A design
pilot operated check valve
with mounting interface DIN 24340 form A
sandwichplate design</p> <p>B size and material
06A = aluminum (F37)</p> <p>C function mode
A = in A acting</p> | <p>D pilot operated check valve free flow
crack pressure POC1-10.-..
005 = 0.3 bar
030 = 2.1 bar
075 = 5.2 bar
100 = 6.9 bar</p> |
|---|--|

Technical Data:

- | | |
|-----------------------------|--|
| nominal pressure: | 250 bar |
| nominal flow: | 60 l/min |
| weight: | 0.6 kg |
| check valve: | POC1-10.- see datasheet no.: MC-210-101-00 |
| free flow direction: | see symbol |
| included: | DT-06 = sealing plate with vulcanized O-ring (Viton FPM) |