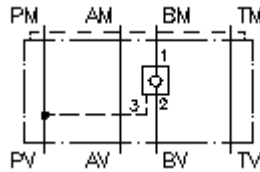


**pilot op.check valve from P CETOP 5
(sandwich plate) in B
REMZ-10A-B/...**



IMAV-Hydraulik GmbH
Breite Strasse 10
D-40670 Meerbusch (Osterath)
Phone +49 (0)2159 - 9188.0
Fax +49 (0)2159 - 4242
E-mail: info@imav.com
Internet: <http://www.imav.com>

 **Symbol:**

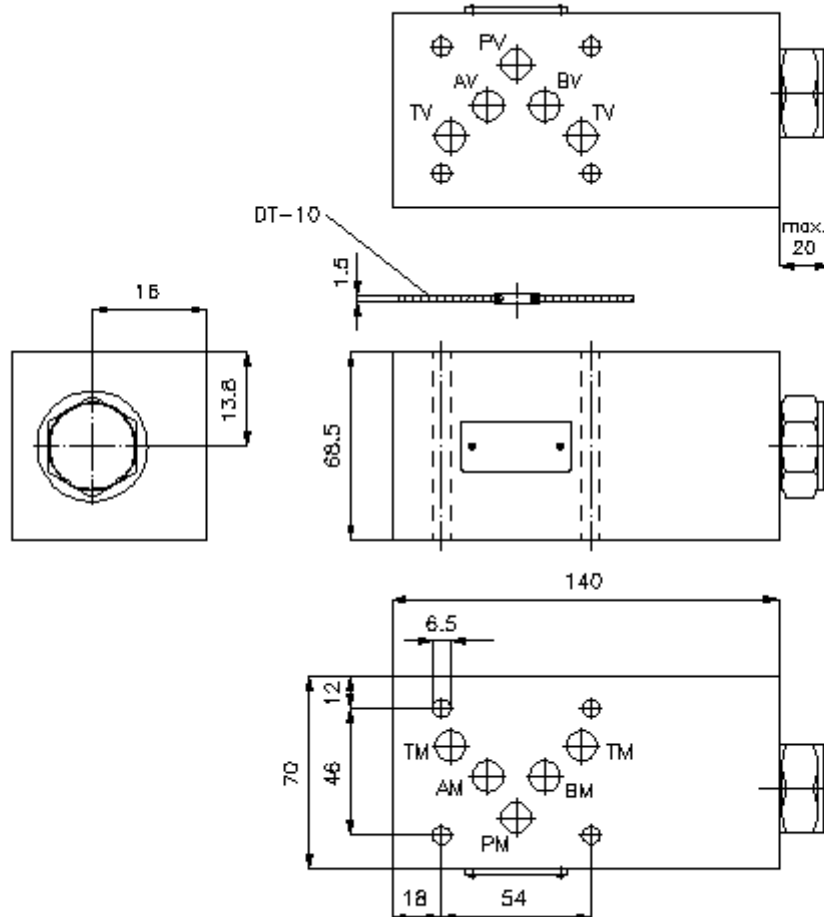


Nom. pressure:
250 bar

Nominal flow:
110 l/min.

IZ-140-401-00

(Subject to change!)



**pilot op.check valve from P CETOP 5
(sandwich plate) in B
REMZ-10A-B/...**



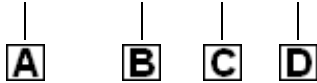
IMAV-Hydraulik GmbH
Breite Strasse 10
D-40670 Meerbusch (Osterath)
Phone +49 (0)2159 - 9188.0
Fax +49 (0)2159 - 4242
E-mail: info@imav.com
Internet: <http://www.imav.com>

IZ-140-401-00

(Subject to change!)

Ordering example:

REMZ - 10A - B / 030



Model code:

A design
pilot operated check valve
pilot operated from P
with mounting interface DIN 24340 form A
sandwichplate design

B size and material
10A = aluminum (F37)

C function mode
B = in B acting

**D pilot operated check valve free flow
crack pressure POC1-12.-..**
005 = 0.3 bar
030 = 2.1 bar
075 = 5.2 bar
100 = 6.9 bar

Technical Data:

nominal pressure: 250 bar
nominal flow: 110 l/min
weight: 1.9 kg
check valve: POC1-12.- see datasheet no.: [MC-210-121-00](#)
free flow direction: see symbol
included: DT-10 = sealing plate with vulcanized O-ring (Viton FPM)