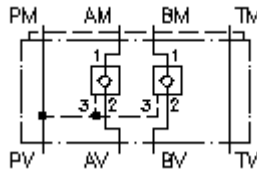


**pilot op.check valve from P CETOP 5  
(sandwich plate) in A+B  
REMZ-10A-A+B/...**



IMAV-Hydraulik GmbH  
Breite Strasse 10  
D-40670 Meerbusch (Osterath)  
Phone +49 (0)2159 - 9188.0  
Fax +49 (0)2159 - 4242  
E-mail: [info@imav.com](mailto:info@imav.com)  
Internet: <http://www.imav.com>

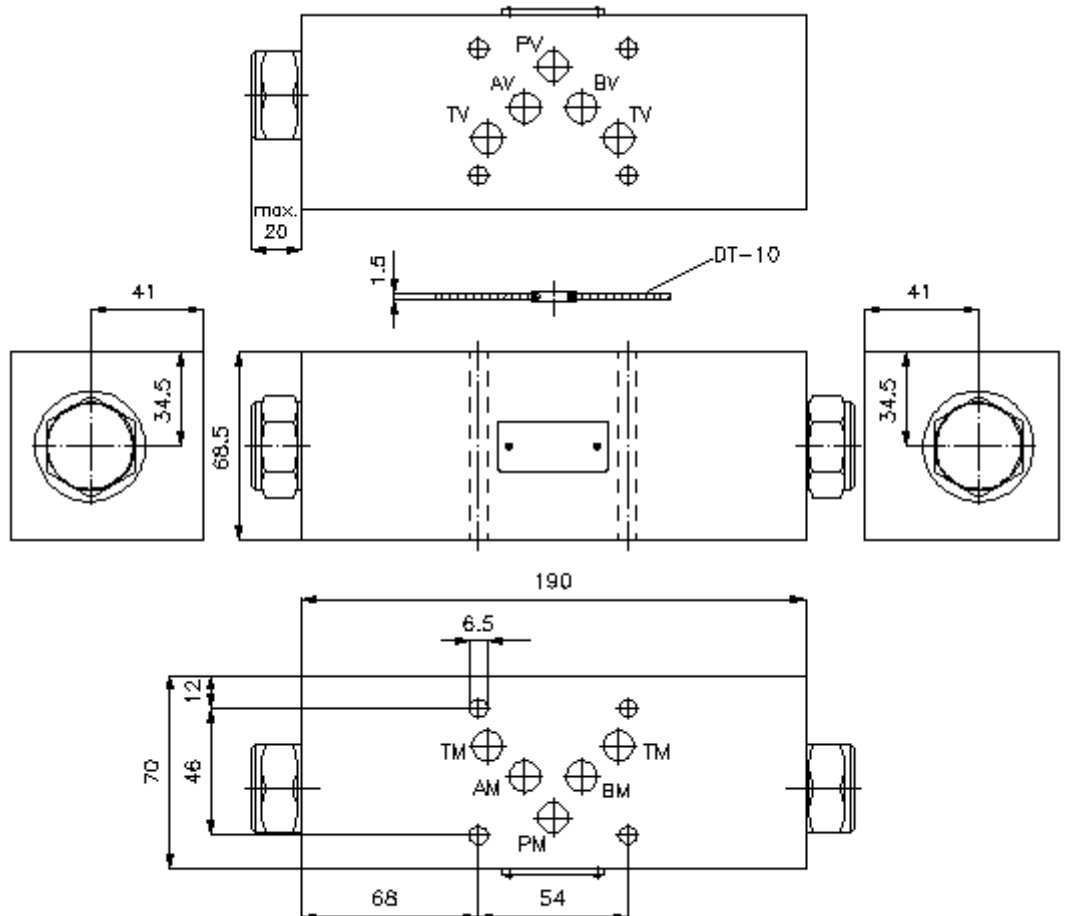
 **Symbol:**



**Nom. pressure:**  
250 bar

**Nominal flow:**  
110 l/min.

**IZ-140-402-00**  
(Subject to change!)



**pilot op.check valve from P CETOP 5  
(sandwich plate) in A+B  
REMZ-10A-A+B/...**



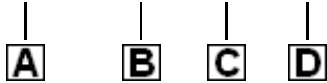
IMAV-Hydraulik GmbH  
Breite Strasse 10  
D-40670 Meerbusch (Osterath)  
Phone +49 (0)2159 - 9188.0  
Fax +49 (0)2159 - 4242  
E-mail: [info@imav.com](mailto:info@imav.com)  
Internet: <http://www.imav.com>

**IZ-140-402-00**

(Subject to change!)

**Ordering example:**

REMZ - 10A - A+B / 030



**Model code:**

- A design**  
pilot operated check valve  
pilot operated from P  
with mounting interface DIN 24340 form A  
sandwichplate design
- B size and material**  
10A = aluminum (F37)

- C function mode**  
A+B = in A and B acting
- D pilot operated check valve free flow  
crack pressure POC1-12.-..**  
005 = 0.3 bar  
030 = 2.1 bar  
075 = 5.2 bar  
100 = 6.9 bar

**Technical Data:**

- nominal pressure:** 250 bar
- nominal flow:** 110 l/min
- weight:** 2.4 kg
- check valve:** POC1-12.- see datasheet no.: [MC-210-121-00](#)
- free flow direction:** see symbol
- included:** DT-10 = sealing plate with vulcanized O-ring (Viton FPM)