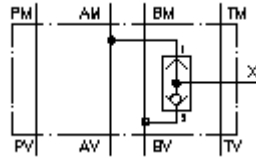


**shuttle valve CETOP 3  
(sandwich plate) external port X  
WRVZ-06.-CCB**



IMAV-Hydraulik GmbH  
Breite Strasse 10  
D-40670 Meerbusch (Osterath)  
Phone +49 (0)2159 - 9188.0  
Fax +49 (0)2159 - 4242  
E-mail: [info@imav.com](mailto:info@imav.com)  
Internet: <http://www.imav.com>

 **Symbol:**

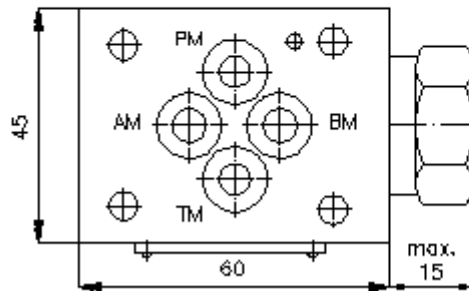
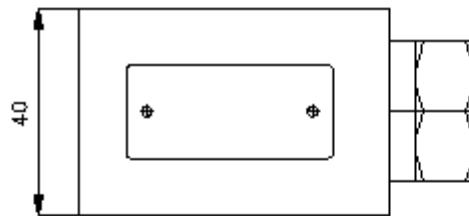
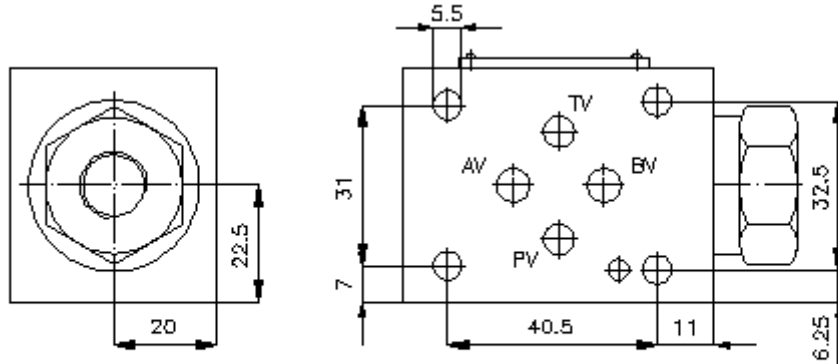


**Nom. pressure:**  
350 bar

**IZ-160-250-00**

(Subject to change!)

port  
"X"  
BSPP 1/4"



**shuttle valve CETOP 3  
(sandwich plate) external port X  
WRVZ-06.-CCB**



IMAV-Hydraulik GmbH  
Breite Strasse 10  
D-40670 Meerbusch (Osterath)  
Phone +49 (0)2159 - 9188.0  
Fax +49 (0)2159 - 4242  
E-mail: [info@imav.com](mailto:info@imav.com)  
Internet: <http://www.imav.com>

**IZ-160-250-00**

(Subject to change!)

**Ordering example:**

WRVZ - 06S - CCB

|  
**A**

|  
**B**

|  
**C**

**Model code:**

**A design**  
shuttle valve plate  
with mounting interface DIN 24340 form A  
sandwichplate design

**B size and material**  
06A = aluminum (F37)  
06S = steel (9SMnPb28K resp. GGG-40)

**C function mode**  
CCB = shuttle-valve BDSV-10.-2-..

**Technical Data:**

**nominal pressure:** 250 bar (A)  
350 bar (S)

**weight:** 0.5 / 1.1 kg (A/S)

**shuttle valve:** BDSV-10.-2-.. see datasheet no. CC-310-101-00

**seals:** included:  
4 pcs. O-ring 9.25 x 1.78