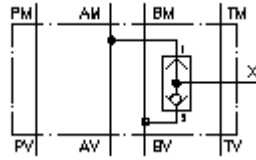


**shuttle valve CETOP 5  
(sandwich plate) external port X  
WRVZ-10.-CC**



IMAV-Hydraulik GmbH  
Breite Strasse 10  
D-40670 Meerbusch (Osterath)  
Phone +49 (0)2159 - 9188.0  
Fax +49 (0)2159 - 4242  
E-mail: [info@imav.com](mailto:info@imav.com)  
Internet: <http://www.imav.com>

 **Symbol:**

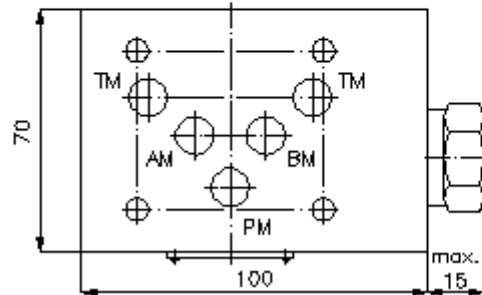
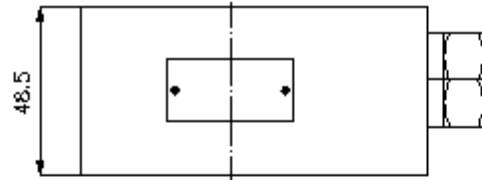
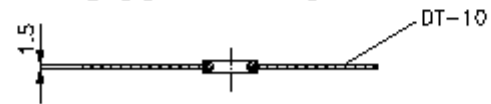
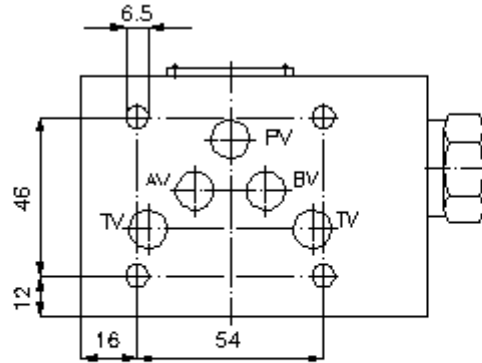
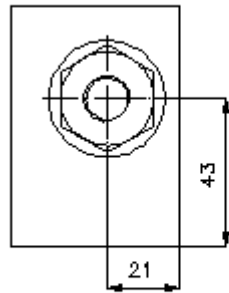


**Nom. pressure:**  
350 bar

**IZ-160-450-00**

(Subject to change!)

port  
"X"  
BSPP 1/4"



**shuttle valve CETOP 5  
(sandwich plate) external port X  
WRVZ-10.-CC**

**Ordering example:**

WRVZ - 10A - CC  
|        |        |  
**A**    **B**    **C**



IMAV-Hydraulik GmbH  
Breite Strasse 10  
D-40670 Meerbusch (Osterath)  
Phone +49 (0)2159 - 9188.0  
Fax +49 (0)2159 - 4242  
E-mail: [info@imav.com](mailto:info@imav.com)  
Internet: <http://www.imav.com>

**IZ-160-450-00**

(Subject to change!)

**Model code:**

**A** **design**  
shuttle valve  
with mounting interface DIN 24340 form A  
sandwichplate design

**B** **size and material**  
10A = aluminum (F37)  
10S = steel (9SMnPb28K resp. GGG-40)

**C** **function mode**  
CC = shuttle-valve BDSV-10.-2-..

**Technical Data:**

**note:** Rotating the shuttle valve plate around the lateral axis (P), port X is optional on the a or B side.

**nominal pressure:** 250 bar (A)  
350 bar (S)

**weight:** 1.1 / 2.8 kg (A/S)

**shuttle valve:** BDSV-10.-2-.. see datasheet no. [CC-310-101-00](#)

**included:** DT-10 = sealing plate with vulcanized O-ring (Viton FPM)