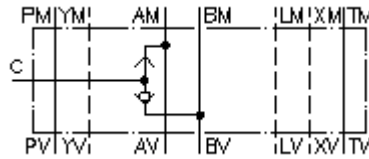


**shuttle valve CETOP 7
(sandwich plate) external port C
WRVZ-16.-CB**



IMAV-Hydraulik GmbH
Breite Strasse 10
D-40670 Meerbusch (Osterath)
Phone +49 (0)2159 - 9188.0
Fax +49 (0)2159 - 4242
E-mail: info@imav.com
Internet: <http://www.imav.com>

 **Symbol:**

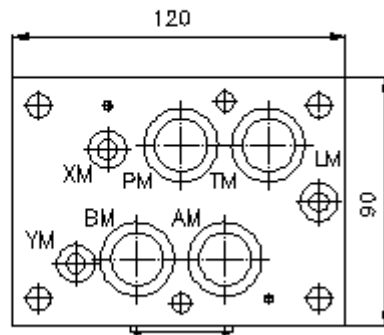
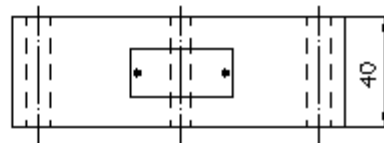
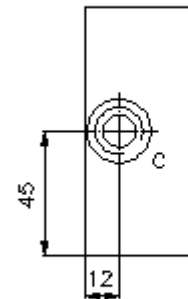
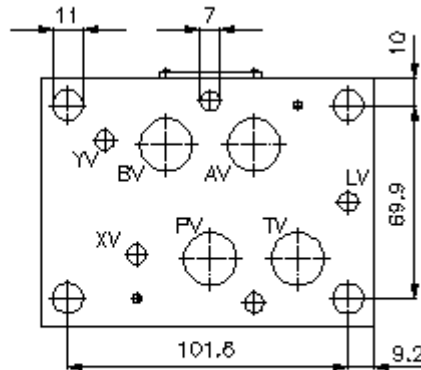


Nom. pressure:
350 bar

IZ-162-500-00

(Subject to change!)

port
"C"
BSPP 1/4"



**shuttle valve CETOP 7
(sandwich plate) external port C
WRVZ-16.-CB**



IMAV-Hydraulik GmbH
Breite Strasse 10
D-40670 Meerbusch (Osterath)
Phone +49 (0)2159 - 9188.0
Fax +49 (0)2159 - 4242
E-mail: info@imav.com
Internet: <http://www.imav.com>

IZ-162-500-00

(Subject to change!)

Ordering example:

WRVZ - 16A - CB

|
A

|
B

|
C

Model code:

A design
shuttle valve
with mounting interface DIN 24340 form A
sandwichplate design

B size and material
16A = aluminum (F37)
16S = steel (9SMnPb28K resp. GGG-40)

C function mode
CB = shuttle-valve WRVCG-06

Technical Data:

nominal pressure: 250 bar (A)
350 bar (S)

weight: 1.1 / 2.6 kg (A/S)

shuttle valve: WRVCG-04 see datasheet no. IC-310-000-00

seals: included:
4 pcs. O-ring 22.22 x 2.62
3 pcs. O-ring 9.13 x 2.62