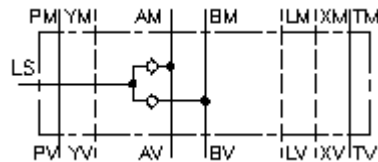


**shuttle valve CETOP 7
(sandwich plate) from A+B ext.to LS
RLSVZ-16.-B02**



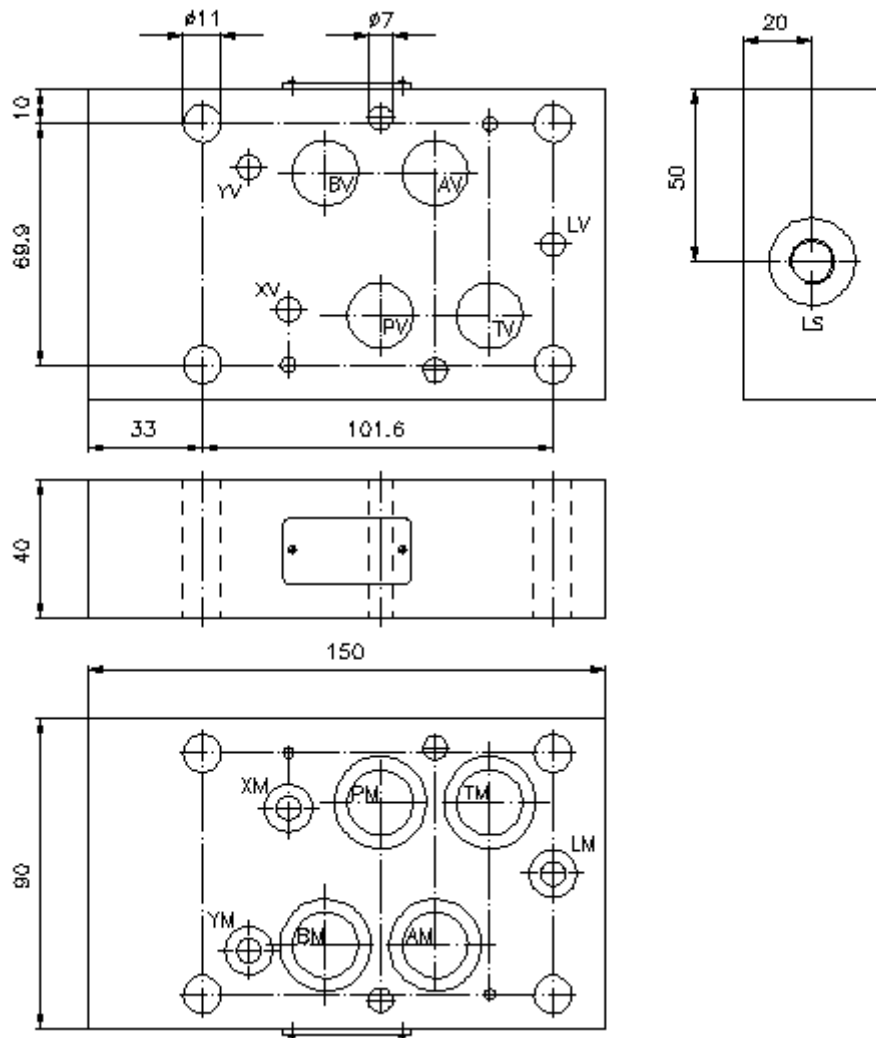
IMAV-Hydraulik GmbH
Breite Strasse 10
D-40670 Meerbusch (Osterath)
Phone +49 (0)2159 - 9188.0
Fax +49 (0)2159 - 4242
E-mail: info@imav.com
Internet: <http://www.imav.com>

 **Symbol:**



Nom. pressure:
350 bar

IZ-170-500-00
(Subject to change!)



**shuttle valve CETOP 7
(sandwich plate) from A+B ext.to LS
RLSVZ-16.-B02**



Ordering example:

RLSZ - 16A - B02
| | |
A **B** **C**

IMAV-Hydraulik GmbH
Breite Strasse 10
D-40670 Meerbusch (Osterath)
Phone +49 (0)2159 - 9188.0
Fax +49 (0)2159 - 4242
E-mail: info@imav.com
Internet: <http://www.imav.com>

IZ-170-500-00
(Subject to change!)

Model code:

A design
shuttle valve plate
with mounting interface DIN 24340 form A
for load-sensing
sandwichplate design

B size and material
16A = aluminum (F37)
16S = steel (9SMnPb28K resp. GGG-40)

C port size
B02 = BSPP 1/4"

Technical Data:

note: through: P, T, A, B : 19 mm
nominal pressure: 250 bar (A)
350 bar (S)
weight: 1.5 / 3.8 kg (A/S)
shuttle valve: RKVE-04 see datasheet no. IC-160-000-00
included: 4 pcs. O-ring 22.22 x 2.62
3 pcs. O-ring 9.19 x 2.62