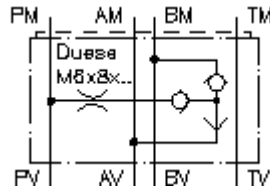


**shuttle valve CETOP 3
(sandwich plate) from A+B int.to P
WRVDZ-06.-...**



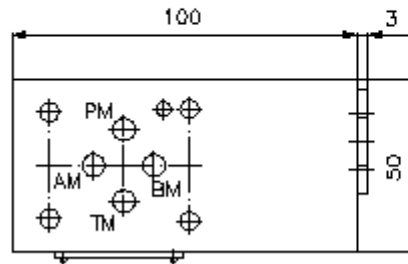
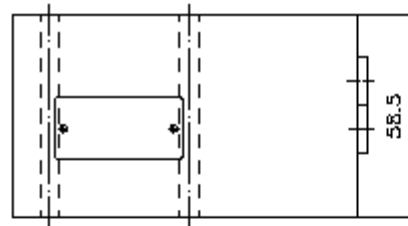
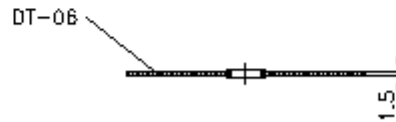
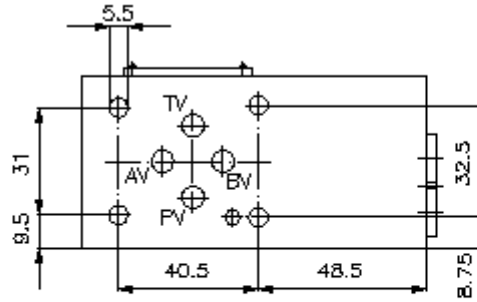
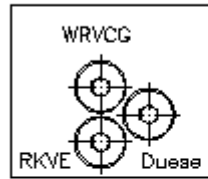
IMAV-Hydraulik GmbH
Breite Strasse 10
D-40670 Meerbusch (Osterath)
Phone +49 (0)2159 - 9188.0
Fax +49 (0)2159 - 4242
E-mail: info@imav.com
Internet: <http://www.imav.com>

 **Symbol:**



Nom. pressure:
350 bar

IZ-180-200-00
(Subject to change!)



**shuttle valve CETOP 3
(sandwich plate) from A+B int.to P
WRVDZ-06.-...**



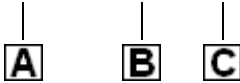
IMAV-Hydraulik GmbH
Breite Strasse 10
D-40670 Meerbusch (Osterath)
Phone +49 (0)2159 - 9188.0
Fax +49 (0)2159 - 4242
E-mail: info@imav.com
Internet: <http://www.imav.com>

IZ-180-200-00

(Subject to change!)

Ordering example:

WRVDZ - 06A - 0.6



Model code:

A design
shuttle valve
with mounting interface DIN 24340 form A
sandwichplate design

B size and material
06A = aluminum (F37)
06S = steel (9SMnPb28K resp. GGG-40)

C orifice diameter
0.4 - 2.0 mm

Technical Data:

nominal pressure: 250 bar (A)
350 bar (S)

weight: 0.8 / 2.3 kg (A/S)

shuttle valve: WRVCG-04 see datasheet no. IC-310-000-00

in-line check valve: RKVE-04 see datasheet no. IC-160-000-00

included: DT-06 = sealing plate with vulcanized O-ring (Viton FPM)