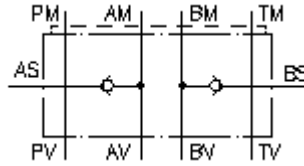


**anti cavitation valves CETOP 3
(sandwich plate) BSPP 1/2" external
NSZ-06A-A+B**



IMAV-Hydraulik GmbH
Breite Strasse 10
D-40670 Meerbusch (Osterath)
Phone +49 (0)2159 - 9188.0
Fax +49 (0)2159 - 4242
E-mail: info@imav.com
Internet: <http://www.imav.com>

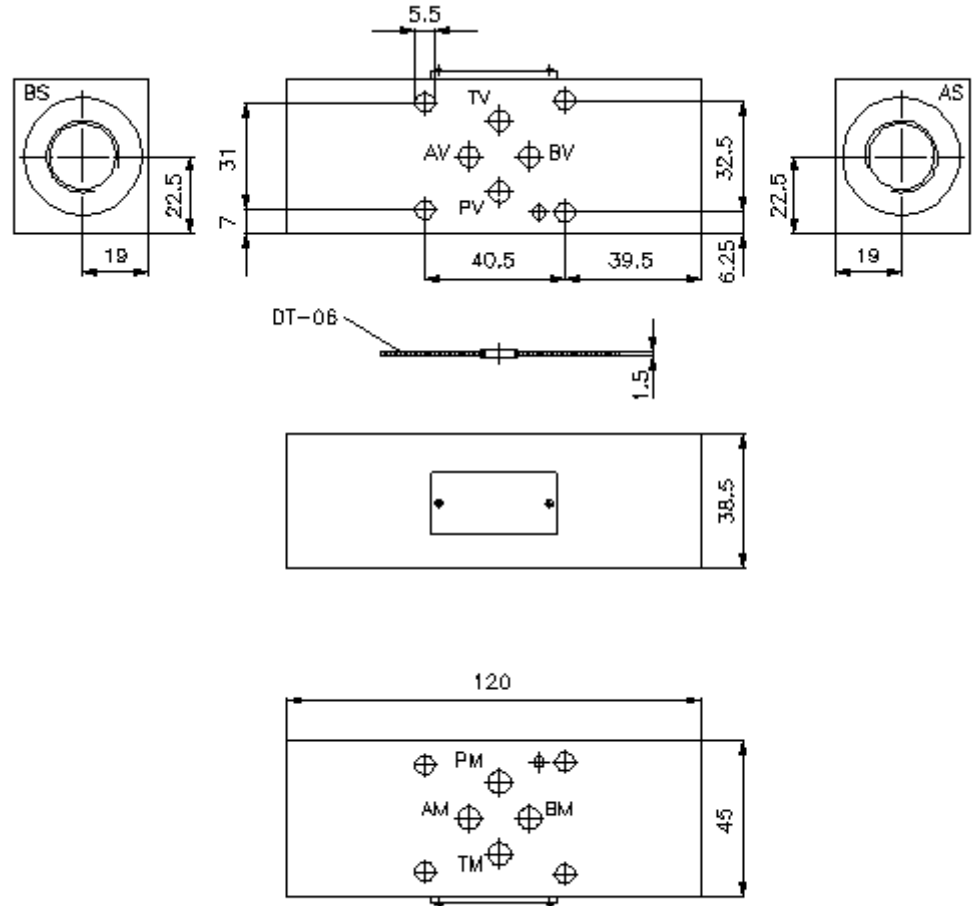
 **Symbol:**



Nom. pressure:
250 bar

Nominal flow:
30 l/min.

IZ-190-200-00
(Subject to change!)



**anti cavitation valves CETOP 3
(sandwich plate) BSPP 1/2" external
NSZ-06A-A+B**



IMAV-Hydraulik GmbH
Breite Strasse 10
D-40670 Meerbusch (Osterath)
Phone +49 (0)2159 - 9188.0
Fax +49 (0)2159 - 4242
E-mail: info@imav.com
Internet: <http://www.imav.com>

IZ-190-200-00

(Subject to change!)

Ordering example:

NSZ - 06A - A+B
| | |
A **B** **C**

Model code:

A **design**
anti cavitation valve
with mounting interface DIN 24340 form A
sandwichplate design

B **size and material**
06A = aluminum (F37)

C **function mode**
A+B = in A and B acting

Technical Data:

nominal pressure: 250 bar
nominal flow: 30 l/min
weight: 0.6 kg
crack pressure: approx. 0.5 bar
in-line check valve: RKVC-08 see datasheet no. IC-210-000-00
included: DT-06 = sealing plate with vulcanized O-ring (Viton FPM)