

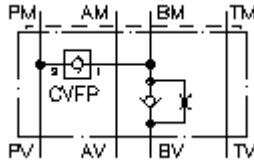
**regeneration circuit plate, CETOP 5
(sandwich plate) in B with orifice
DSCZ-10.-B/..mm**



Symbol:

Nom. pressure:
350 bar

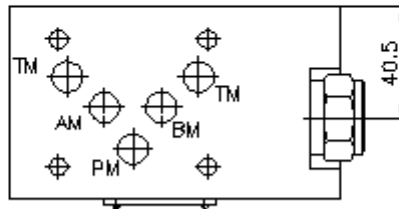
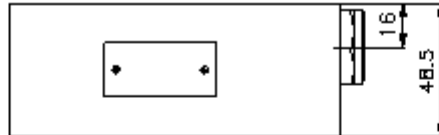
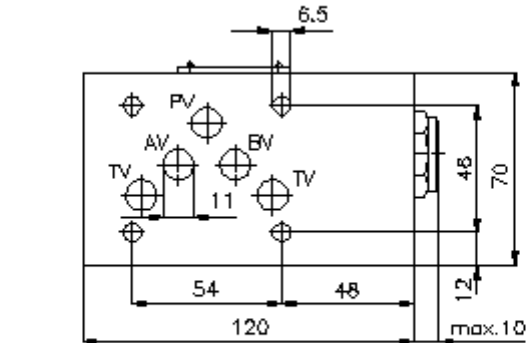
Nominal flow:
50 l/min.



IMAV-Hydraulik GmbH
Breite Strasse 10
D-40670 Meerbusch (Osterath)
Phone +49 (0)2159 - 9188.0
Fax +49 (0)2159 - 4242
E-mail: info@imav.com
Internet: <http://www.imav.com>

IZ-210-453-00

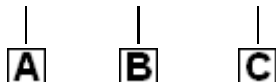
(Subject to change!)



**regeneration circuit plate, CETOP 5
(sandwich plate) in B with orifice
DSCZ-10.-B/..mm**

Ordering example:

DSCZ - 10A - B/1.0 MM



IMAV-Hydraulik GmbH
Breite Strasse 10
D-40670 Meerbusch (Osterath)
Phone +49 (0)2159 - 9188.0
Fax +49 (0)2159 - 4242
E-mail: info@imav.com
Internet: <http://www.imav.com>

IZ-210-453-00

(Subject to change!)

Model code:

A **design**
regeneration plate
with mounting interface DIN 24340 form A
sandwichplate design

B **size and material**
10A = aluminum (F37)
10S = steel (9SMnPb28K resp. GGG-40)

C **function mode**
B/1.0mm = check valve with orifice 1.0
mm in the "B" channel

Technical Data:

nominal pressure: 250 bar (A)
350 bar (S)

nominal flow: 50 l/min

weight: 1.1 / 2.9 kg (A/S)

crack pressure: 0.2 - 0.3 bar

free flow direction: see symbol

check valve: CVFP-10.-0-.. see datasheet no. [CC-110-101-00](#)

included: DT-10 = sealing plate with vulcanized O-ring (Viton FPM)