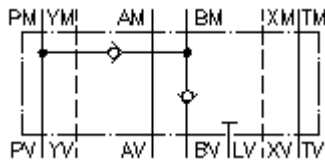


**regeneration circuit plate, CETOP 8
(sandwich plate) in B
DSVZ-25S-BS**



Symbol:



Nom. pressure:
350 bar

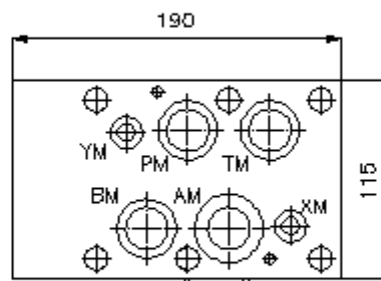
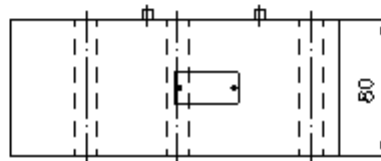
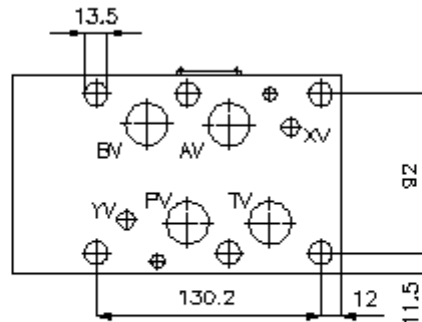
Nominal flow:
240 l/min.



IMAV-Hydraulik GmbH
Breite Strasse 10
D-40670 Meerbusch (Osterath)
Phone +49 (0)2159 - 9188.0
Fax +49 (0)2159 - 4242
E-mail: info@imav.com
Internet: <http://www.imav.com>

IZ-210-602-00

(Subject to change!)



**regeneration circuit plate, CETOP 8
(sandwich plate) in B
DSVZ-25S-BS**



IMAV-Hydraulik GmbH
Breite Strasse 10
D-40670 Meerbusch (Osterath)
Phone +49 (0)2159 - 9188.0
Fax +49 (0)2159 - 4242
E-mail: info@imav.com
Internet: <http://www.imav.com>

IZ-210-602-00
(Subject to change!)

Ordering example:

DSVZ - 25S - BS
| | |
A **B** **C**

Model code:

A design
regeneration plate
with mounting interface DIN 24340 form A
sandwichplate design

B size and material
25S = steel (9SMnPb28K resp. GGG-40)

C function mode
BS = check valve in the "B" channel

Technical Data:

nominal pressure: 350 bar
nominal flow: 240 l/min
weight: 12.3 kg
crack pressure: 0.2 - 0.3 bar
free flow direction: see symbol
included: 3 pcs. O-ring 28.17 x 3.53
2 pcs. O-ring 14.00 x 2.62
2 pcs. O-ring 34.00 x 2.50