

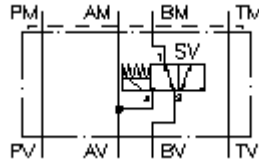
**regeneration circuit plate, CETOP 3
(sandwich plate)
DPSEZ-06S-B/.....**



Symbol:

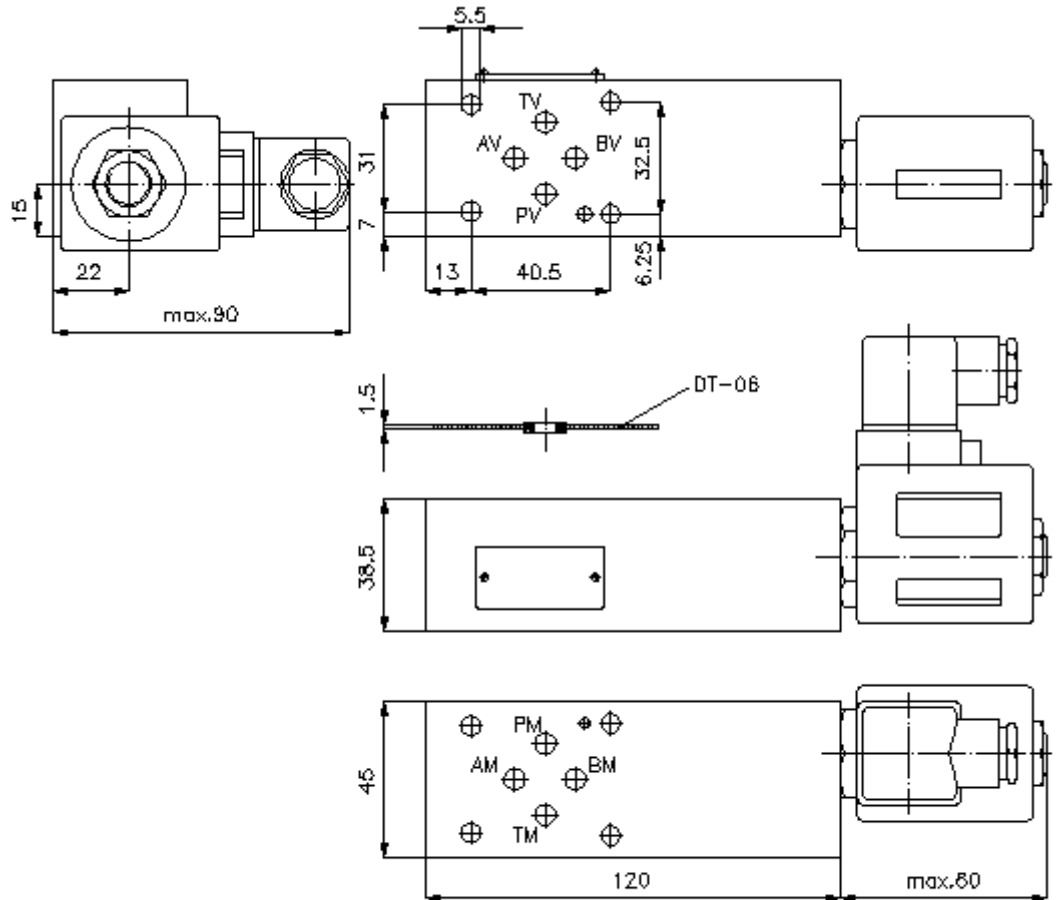
Nom. pressure:
350 bar

Nominal flow:
25 l/min.



IMAV-Hydraulik GmbH
Breite Strasse 10
D-40670 Meerbusch (Osterath)
Phone +49 (0)2159 - 9188.0
Fax +49 (0)2159 - 4242
E-mail: info@imav.com
Internet: <http://www.imav.com>

IZ-270-200-00
(Subject to change!)



**regeneration circuit plate, CETOP 3
(sandwich plate)
DPSEZ-06S-B/.....**



IMAV-Hydraulik GmbH
Breite Strasse 10
D-40670 Meerbusch (Osterath)
Phone +49 (0)2159 - 9188.0
Fax +49 (0)2159 - 4242
E-mail: info@imav.com
Internet: <http://www.imav.com>

IZ-270-200-00

(Subject to change!)

Ordering example:

DPSEZ - 06S - B / 024D G H
| | | | | |
A B C D E F

Model code:

- A design**
regeneration plate
with mounting interface DIN 24340 form A
sandwichplate design
- B size and material**
06S = steel (9SMnPb28K resp. GGG-40)
- C function mode**
B = in B acting
- D voltage**
DC current:
012D = 12V DC
024D = 24V DC
AC current:
120A = 120V AC
240A = 240V AC
other voltage on request
- E power supply**
G = DIN 43650 connector, other
connectors see data sheet no.: MS-010-
000-00
- F function mode**
H = high pressure variant only bei SV11-
10.-3-..

Technical Data:

- note:** port "A" must be connected with the bottom side of the cylinder.
- nominal pressure:** 250 bar (SV1)
350 bar (SV11)
- nominal flow:** 25 l/min
- weight:** 1.7 kg
- screw in valve:** solenoid valve: SV1-10.-3-.. see datasheet no. [MS-510-100-00](#)
- screw in valve:** solenoid valve: SV11-10.-3-.. see datasheet no. [MS-510-101-00](#)
- included:** DT-06 = sealing plate with vulcanized O-ring (Viton FPM)