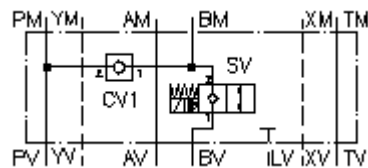


**regeneration circuit plate, CETOP 7  
(sandwich plate)  
DPSEZ-16.-B./.....**



IMAV-Hydraulik GmbH  
Breite Strasse 10  
D-40670 Meerbusch (Osterath)  
Phone +49 (0)2159 - 9188.0  
Fax +49 (0)2159 - 4242  
E-mail: [info@imav.com](mailto:info@imav.com)  
Internet: <http://www.imav.com>

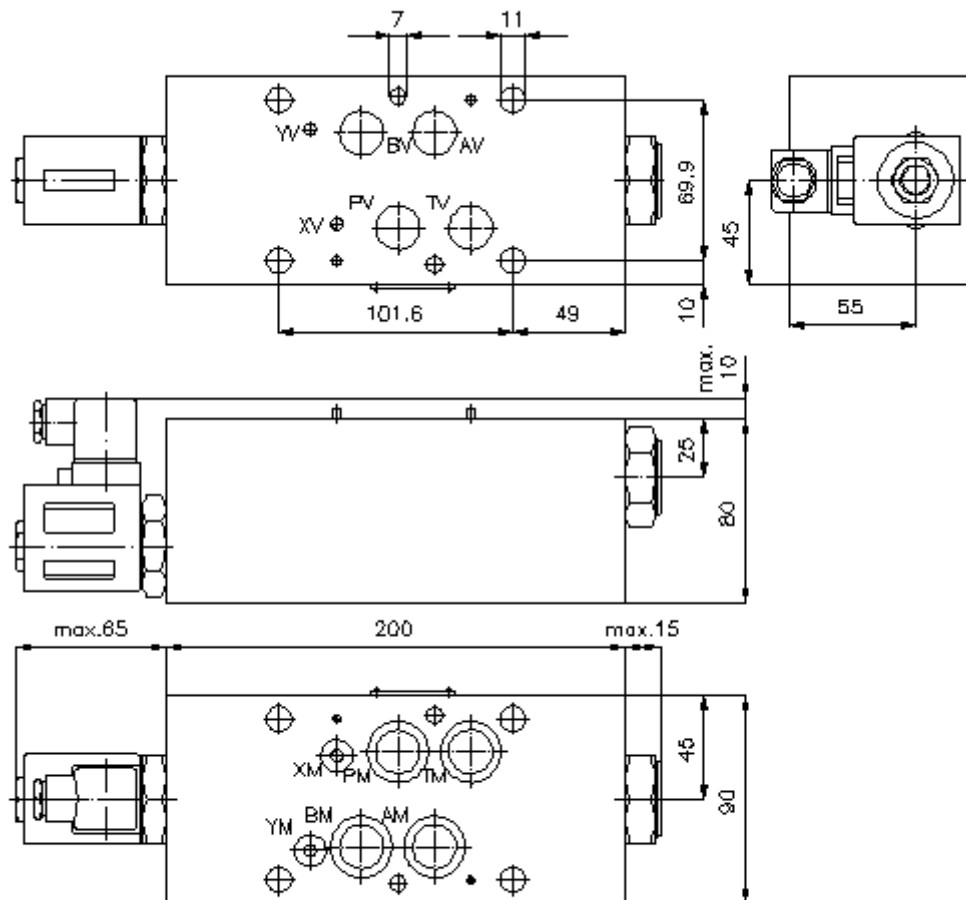
**Symbol:**



**Nom. pressure:**  
350 bar

**Nominal flow:**  
250 l/min.

**IZ-270-500-00**  
(Subject to change!)



**regeneration circuit plate, CETOP 7  
(sandwich plate)  
DPSEZ-16.-B./.....**



IMAV-Hydraulik GmbH  
Breite Strasse 10  
D-40670 Meerbusch (Osterath)  
Phone +49 (0)2159 - 9188.0  
Fax +49 (0)2159 - 4242  
E-mail: [info@imav.com](mailto:info@imav.com)  
Internet: <http://www.imav.com>

**IZ-270-500-00**

(Subject to change!)

**Ordering example:**

DPSEZ - 16 A - B C / 024D G H  
| | | | | | |  
**A B C D E F G**

**Model code:**

- A design**  
regeneration plate  
with mounting interface DIN 24340 form A  
sandwichplate design
- B size and material**  
16A = aluminum (F37)  
16S = steel (9SMnPb28K resp. GGG-40)
- C function mode**  
B = in B acting
- D standard position of solenoid valve**  
C = normally closed  
SV1-16.-C- see data sheet no.: [MS-240-160-00](#)  
SV13-16.-C-.. see data sheet no.: [MS-240-161-00](#)  
0 = normally open  
SV3-16.-0- see data sheet no.: [MS-440-160-00](#)  
SV13-16.-0-.. see data sheet no.: [MS-440-161-00](#)
- E voltage**  
DC current:  
012D = 12V DC  
024D = 24V DC  
AC current:  
120A = 120V AC  
240A = 240V AC  
other voltage on request
- F power supply**  
G = DIN 43650 connector, other  
connectors see data sheet no.: MS-010-000-00
- G H = high pressure variant only for (SV13)**  
for steel-design only

**Technical Data:**

- note:** port "A" must be connected with the bottom side of the cylinder.
- nominal pressure:** 210 bar (A)  
350 bar (S)
- nominal flow:** 250 l/min
- weight:** 4.6 / 11.11 kg (A/S)
- screw in valve:** check valve CV1-16.-.. see datasheet no. [MC-140-160-00](#)
- included:** 3 pcs. O-ring 22.22 x 2.62  
3 pcs. O-ring 9.19 x 2.62