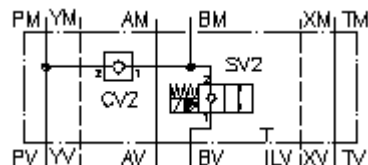


**regeneration circuit plate, CETOP 8
(sandwich plate)
DPSEZ-25.-B./.....**



IMAV-Hydraulik GmbH
Breite Strasse 10
D-40670 Meerbusch (Osterath)
Phone +49 (0)2159 - 9188.0
Fax +49 (0)2159 - 4242
E-mail: info@imav.com
Internet: <http://www.imav.com>

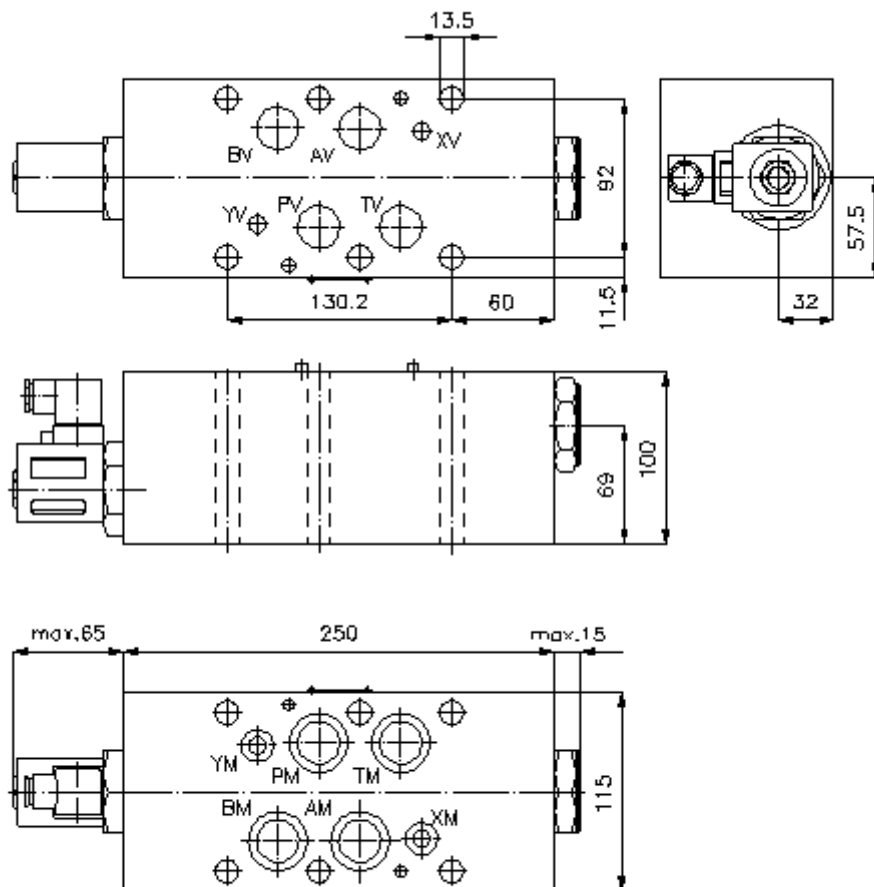
 **Symbol:**



Nom. pressure:
350 bar

Nominal flow:
450 l/min.

IZ-270-600-00
(Subject to change!)



**regeneration circuit plate, CETOP 8
(sandwich plate)
DPSEZ-25.-B./.....**



IMAV-Hydraulik GmbH
Breite Strasse 10
D-40670 Meerbusch (Osterath)
Phone +49 (0)2159 - 9188.0
Fax +49 (0)2159 - 4242
E-mail: info@imav.com
Internet: <http://www.imav.com>

IZ-270-600-00

(Subject to change!)

Ordering example:

DPSEZ - 25 A - B C / 024D G H
 | | | | | | |
 A B C D E F G

Model code:

- | | |
|---|---|
| <p>A design
regeneration plate
with mounting interface DIN 24340 form A
sandwichplate design</p> <p>B size and material
25A = aluminum (F37)
25S = steel (9SMnPb28K resp. GGG-40)</p> <p>C function mode
B = in B acting</p> <p>D standard position of solenoid valve
C = normally closed
SV2-20.-C- see data sheet no.: <u>MS-240-200-00</u>
SV13-20.-C-.. see data sheet no.: <u>MS-240-201-00</u>
0 = normally open
SV3-20.-0- see data sheet no.: <u>MS-440-200-00</u>
SV13-20.-0-.. see data sheet no.: <u>MS-440-201-00</u></p> | <p>E voltage
DC current:
012D = 12V DC
024D = 24V DC
AC current:
120A = 120V AC
240A = 240V AC
other voltage on request</p> <p>F power supply
G = DIN 43650 connector, other
connectors see data sheet no.: MS-010-000-00</p> <p>G H = high pressure variant only for (SV13)
for steel-design only</p> |
|---|---|

Technical Data:

- | | |
|--------------------------|--|
| note: | port "A" must be connected with the bottom side of the cylinder. |
| nominal pressure: | 210 bar (A)
350 bar (S) |
| nominal flow: | 450 l/min |
| weight: | 7.4 / 20.3 kg (A/S) |
| screw in valve: | check valve CV2-20.-.. see datasheet no. <u>MC-150-200-00</u> |
| included: | 4 pcs. O-ring 28.17 x 3.53
2 pcs. O-ring 14.00 x 2.65 |