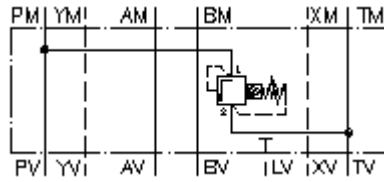


**relief valve, CETOP 7  
(sandwich plate) in P to T  
DBVZ-16.-PPS./..**



IMAV-Hydraulik GmbH  
Breite Strasse 10  
D-40670 Meerbusch (Osterath)  
Phone +49 (0)2159 - 9188.0  
Fax +49 (0)2159 - 4242  
E-mail: [info@imav.com](mailto:info@imav.com)  
Internet: <http://www.imav.com>

 **Symbol:**

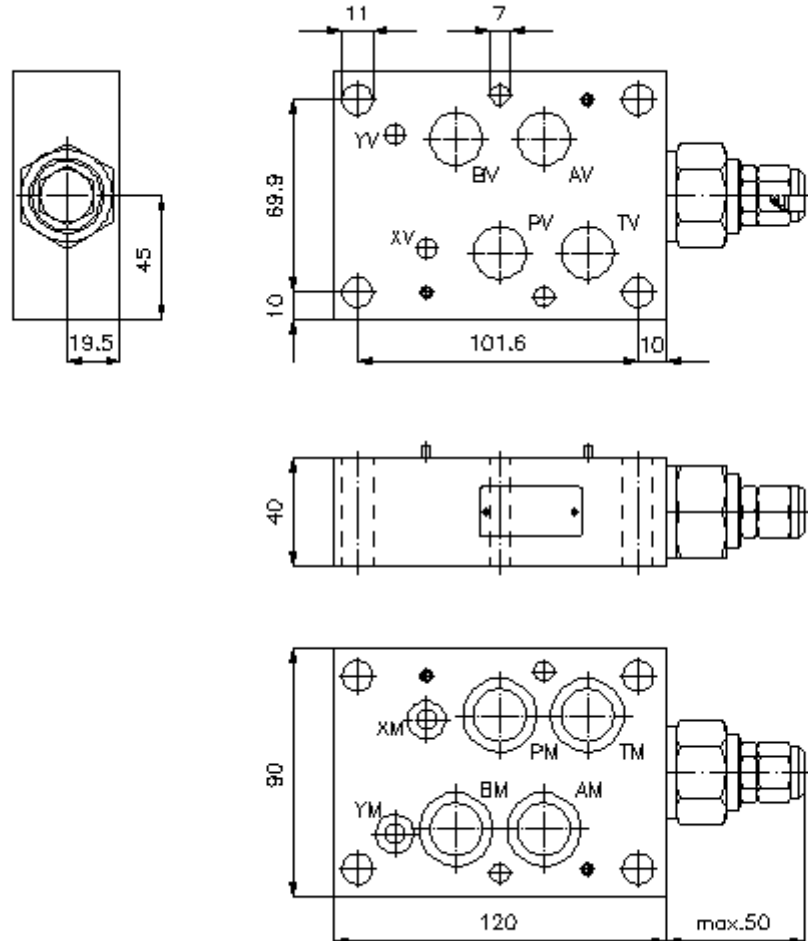


**Nom. pressure:**  
350 bar

**Nominal flow:**  
230 l/min.

**IZ-410-550-00**

(Subject to change!)



**relief valve, CETOP 7  
(sandwich plate) in P to T  
DBVZ-16.-PPS./..**



IMAV-Hydraulik GmbH  
Breite Strasse 10  
D-40670 Meerbusch (Osterath)  
Phone +49 (0)2159 - 9188.0  
Fax +49 (0)2159 - 4242  
E-mail: [info@imav.com](mailto:info@imav.com)  
Internet: <http://www.imav.com>

**IZ-410-550-00**

(Subject to change!)

**Ordering example:**

DBVZ - 16A - P PS C / 15  
| | | | |  
**A B C D E F**

**Model code:**

- |   |  |
|---|--|
| <p><b>A design</b><br/>relief-valve<br/>with mounting interface DIN 24340 form A<br/>sandwichplate design</p> <p><b>B size and material</b><br/>16A = aluminum (F37)<br/>16S = steel (9SMnPb28K resp. GGG-40)</p> <p><b>C function mode</b><br/>P = in P acting</p> | <p><b>D relief valve</b><br/>PS = RVPS-12.-... (pilot operated) see data<br/>sheet no.: <u>CP-110-121-00</u></p> <p><b>E adjustment</b><br/>C = cap</p> <p><b>F pressure range (RVPS)</b><br/>15 = 3.4 - 105 bar<br/>30 = 3.4 - 210 bar<br/>50 = 3.4 - 350 bar</p> |
|---|--|

**Technical Data:**

**nominal pressure:** 250 bar (A)  
350 bar (S)

**nominal flow:** 230 l/min

**weight:** 1.5 / 3.6 kg (A/S)

**relief valve:** RVPS-12.-... see datasheet no. CP-110-121-00

**included:** 4 pcs. O-ring 22.22 x 2.62  
2 pcs. O-ring 9.19 x 2.62