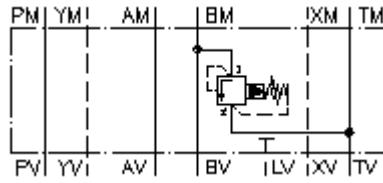


**relief valve, CETOP 7
(sandwich plate) in B to T
DBVZ-16.-BPS./..**



IMAV-Hydraulik GmbH
Breite Strasse 10
D-40670 Meerbusch (Osterath)
Phone +49 (0)2159 - 9188.0
Fax +49 (0)2159 - 4242
E-mail: info@imav.com
Internet: <http://www.imav.com>

 **Symbol:**

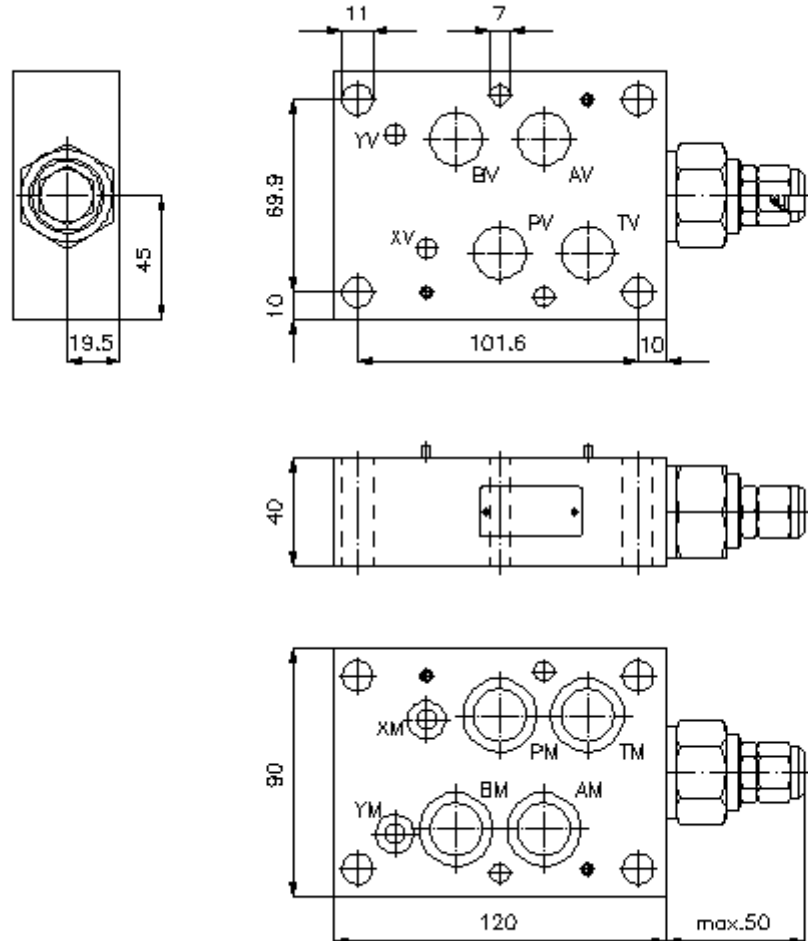


Nom. pressure:
350 bar

Nominal flow:
230 l/min.

IZ-410-552-00

(Subject to change!)



**relief valve, CETOP 7
(sandwich plate) in B to T
DBVZ-16.-BPS./..**



IMAV-Hydraulik GmbH
Breite Strasse 10
D-40670 Meerbusch (Osterath)
Phone +49 (0)2159 - 9188.0
Fax +49 (0)2159 - 4242
E-mail: info@imav.com
Internet: <http://www.imav.com>

IZ-410-552-00

(Subject to change!)

Ordering example:

DBVZ - 16A - B PS C / 15
| | | | |
A B C D E F

Model code:

- | | |
|---|--|
| <p>A design
relief-valve
with mounting interface DIN 24340 form A
sandwichplate design</p> <p>B size and material
16A = aluminum (F37)
16S = steel (9SMnPb28K resp. GGG-40)</p> <p>C function mode
B = in B acting</p> | <p>D relief valve
PS = RVPS-12.-... (pilot operated) see data
sheet no.: <u>CP-110-121-00</u></p> <p>E adjustment
C = cap</p> <p>F pressure range (RVPS)
15 = 3.4 - 105 bar
30 = 3.4 - 210 bar
50 = 3.4 - 350 bar</p> |
|---|--|

Technical Data:

nominal pressure: 250 bar (A)
350 bar (S)

nominal flow: 230 l/min

weight: 1.5 / 3.6 kg (A/S)

relief valve: RVPS-12.-... see datasheet no. CP-110-121-00

included: 4 pcs. O-ring 22.22 x 2.62
2 pcs. O-ring 9.19 x 2.62