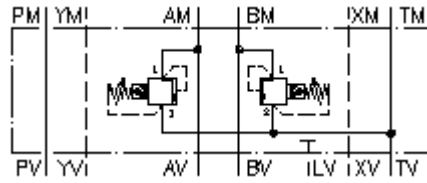


**relief valve, CETOP 7
(sandwich plate) in A+B to T
DBVZ-16.-A+BPS./..**



IMAV-Hydraulik GmbH
Breite Strasse 10
D-40670 Meerbusch (Osterath)
Phone +49 (0)2159 - 9188.0
Fax +49 (0)2159 - 4242
E-mail: info@imav.com
Internet: <http://www.imav.com>

Symbol:

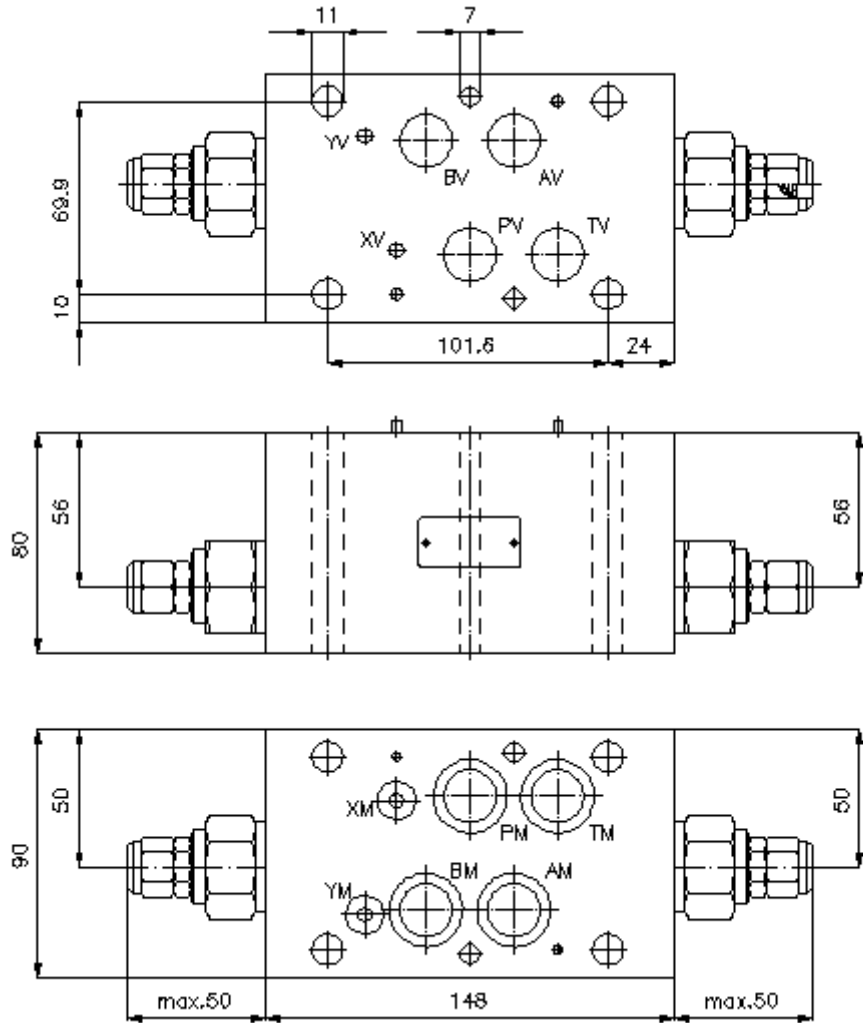


Nom. pressure:
350 bar

Nominal flow:
230 l/min.

IZ-420-550-00

(Subject to change!)



**relief valve, CETOP 7
(sandwich plate) in A+B to T
DBVZ-16.-A+BPS./..**



IMAV-Hydraulik GmbH
Breite Strasse 10
D-40670 Meerbusch (Osterath)
Phone +49 (0)2159 - 9188.0
Fax +49 (0)2159 - 4242
E-mail: info@imav.com
Internet: <http://www.imav.com>

IZ-420-550-00

(Subject to change!)

Ordering example:

DBVZ - 16A - A+B PS C / 15
| | | | |
A **B** **C** **D** **E** **F**

Model code:

- | | |
|--|---|
| <p>A design
relief-valve
with mounting interface DIN 24340 form A
sandwichplate design</p> <p>B size and material
16A = aluminum (F37)
16S = steel (9SMnPb28K resp. GGG-40)</p> <p>C function mode
A+B = in A and B acting</p> | <p>D relief valve
PS = RVPS-12.-... (pilot operated) see data
sheet no.: <u>CP-110-121-00</u></p> <p>E adjustment
C = cap</p> <p>F pressure range (RVPS)
15 = 3.4 - 105 bar
30 = 3.4 - 210 bar
50 = 3.4 - 350 bar</p> |
|--|---|

Technical Data:

nominal pressure:	250 bar (A) 350 bar (S)
nominal flow:	230 l/min
weight:	2.5 / 7.5 kg (A/S)
relief valve:	RVPS-12.-... see datasheet no. <u>CP-110-121-00</u>
included:	4 pcs. O-ring 22.22 x 2.62 2 pcs. O-ring 9.19 x 2.62