

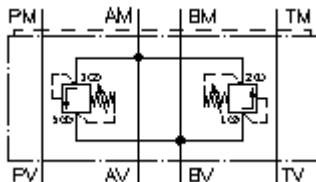
**dual relief valve, CETOP 3
(sandwich plate) A to B+B to A
DDBVZ-06.-01./..**



IMAV-Hydraulik GmbH
Breite Strasse 10
D-40670 Meerbusch (Osterath)
Phone +49 (0)2159 - 9188.0
Fax +49 (0)2159 - 4242
E-mail: info@imav.com
Internet: <http://www.imav.com>



Symbol:

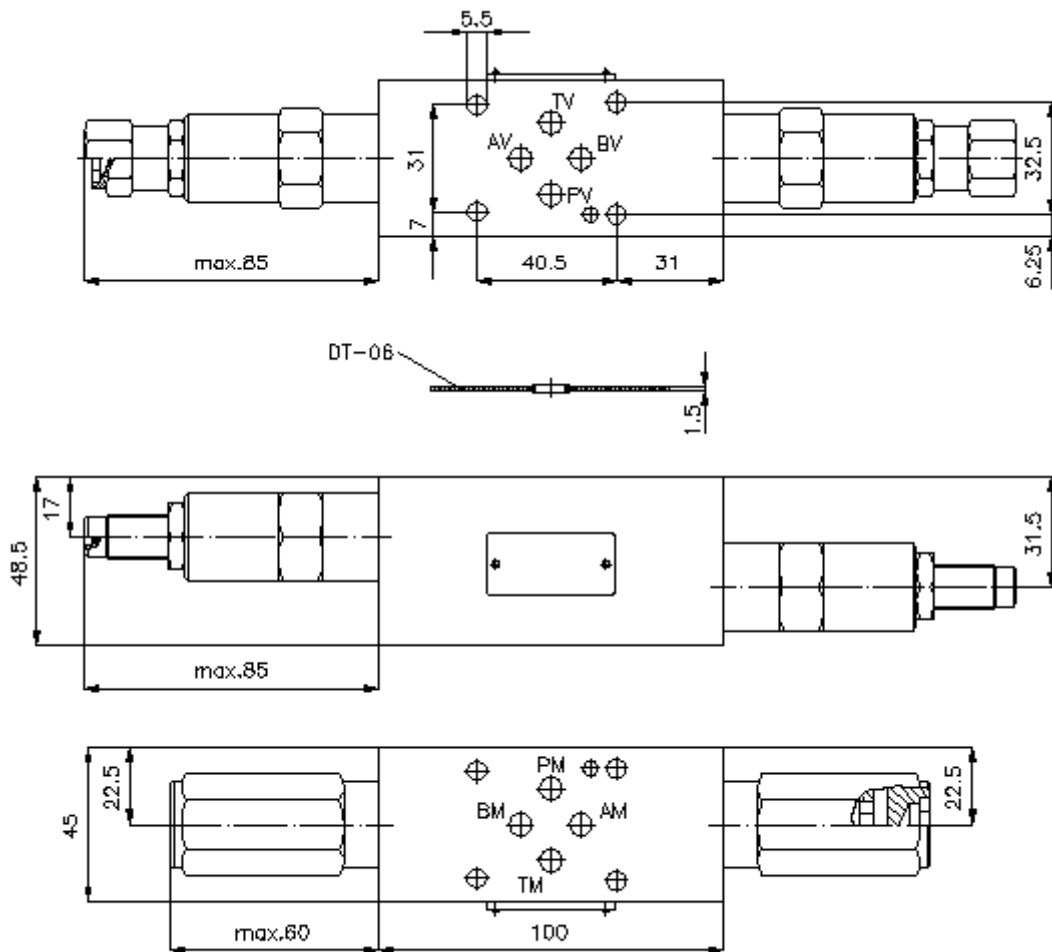


Nom. pressure:
350 bar

Nominal flow:
75 l/min.

IZ-425-200-00

(Subject to change!)



**dual relief valve, CETOP 3
(sandwich plate) A to B+B to A
DDBVZ-06.-01./..**



IMAV-Hydraulik GmbH
Breite Strasse 10
D-40670 Meerbusch (Osterath)
Phone +49 (0)2159 - 9188.0
Fax +49 (0)2159 - 4242
E-mail: info@imav.com
Internet: <http://www.imav.com>

IZ-425-200-00

(Subject to change!)

Ordering example:

DDBVZ - 06A - 01 C / 18
| | | | |
A **B** **C** **D** **E**

Model code:

- A design**
bi-directional relief-valve
with mounting interface DIN 24340 form A
sandwichplate design
- B size and material**
06A = aluminum (F37)
06S = steel (9SMnPb28K resp. GGG-40)
- C relief valve**
01 = RV1-10.-.. (direct acting) see data
sheet no.: [MP-100-100-00](#)
03 = RV3-10.-.. (direct acting) see data
sheet no.: [MP-130-101-00](#)
06 = RV6-10.-.. (direct acting) see data
sheet no.: [MP-110-101-00](#)
08 = RV8-10.-.. (direct acting) see data
sheet no.: [MP-140-101-00](#)
10 = RV10-10.-.. (direct acting) see data
sheet no.: [MP-110-103-00](#)
- D adjustment**
J = internal (not for RV6 + RV10)
S = screw adjustment
C = cap

- E pressure range**
RV1-10.-..
03 = 3.4 - 21 bar
09 = 6.9 - 62 bar
18 = 17.2 - 124 bar
36 = 34.5 - 248 bar
RV3-10.-..
03 = 3.4 - 21 bar
06 = 6.9 - 41 bar
09 = 13.8 - 62 bar
18 = 20.7 - 124 bar
36 = 20.7 - 248 bar
RV6-10.-..
25 = 3.4 - 172 bar
50 = 137.9 - 350 bar
RV8-10.-..
04 = 3.4 - 31 bar
12 = 6.9 - 86 bar
25 = 17.2 - 172 bar
50 = 37.9 - 350 bar
RV10.-..
02 = 1.7 - 17 bar
05 = 3.4 - 31 bar
10 = 17.2 - 69 bar

Technical Data:

- nominal pressure:** 250 bar (A)
350 bar (S)
- nominal flow:** 75 l/min
- weight:** 0.7 / 1.8 kg (A/S)
- included:** DT-06 = sealing plate with vulcanized O-ring (Viton FPM)