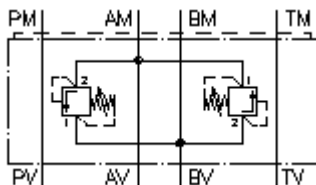


**dual relief valve, CETOP 3
(sandwich plate) A to B+B to A
DDBVZ-06.-DA./..**



IMAV-Hydraulik GmbH
Breite Strasse 10
D-40670 Meerbusch (Osterath)
Phone +49 (0)2159 - 9188.0
Fax +49 (0)2159 - 4242
E-mail: info@imav.com
Internet: <http://www.imav.com>

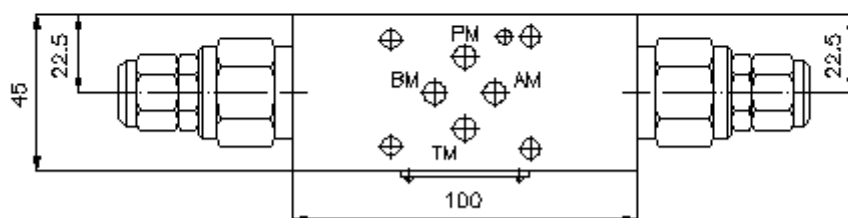
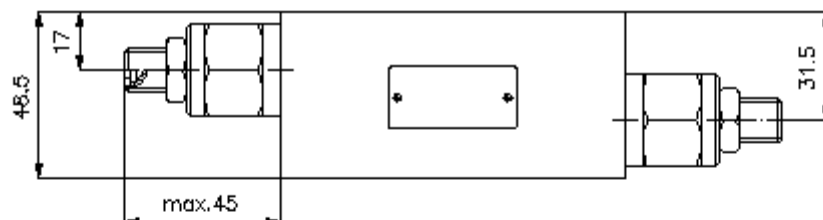
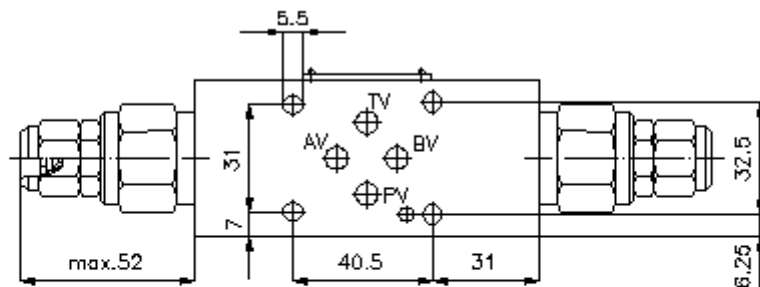
 **Symbol:**



Nom. pressure:
350 bar

Nominal flow:
75 l/min.

IZ-425-250-00
(Subject to change!)



**dual relief valve, CETOP 3
(sandwich plate) A to B+B to A
DDBVZ-06.-DA./..**



IMAV-Hydraulik GmbH
Breite Strasse 10
D-40670 Meerbusch (Osterath)
Phone +49 (0)2159 - 9188.0
Fax +49 (0)2159 - 4242
E-mail: info@imav.com
Internet: <http://www.imav.com>

IZ-425-250-00

(Subject to change!)

Ordering example:

DDBVZ - 06A - DA C / 30
| | | | |
A **B** **C** **D** **E**

Model code:

- A design**
bi-directional relief-valve
with mounting interface DIN 24340 form A
sandwichplate design
- B size and material**
06A = aluminum (F37)
06S = steel (9SMnPb28K resp. GGG-40)
- C relief valve**
DA = RVDA-10.-... see data sheet no.: [CP-120-101-00](#)

- D adjustment**
S = screw adjustment
C = cap
- E pressure range**
RVDA-10.-...
15 = 6.9 - 105 bar
30 = 20.7 - 210 bar
50 = 34.5 - 350 bar

Technical Data:

nominal pressure: 250 bar (A)
350 bar (S)

nominal flow: 75 l/min

weight: 0.7 / 1.8 kg (A/S)

included: DT-06 = sealing plate with vulcanized O-ring (Viton FPM)