

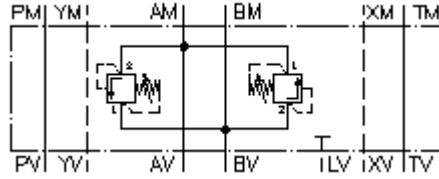
**dual relief valve, CETOP 7
(sandwich plate) A to B+B to A
DDBVZ-16.-03S/..**



Symbol:

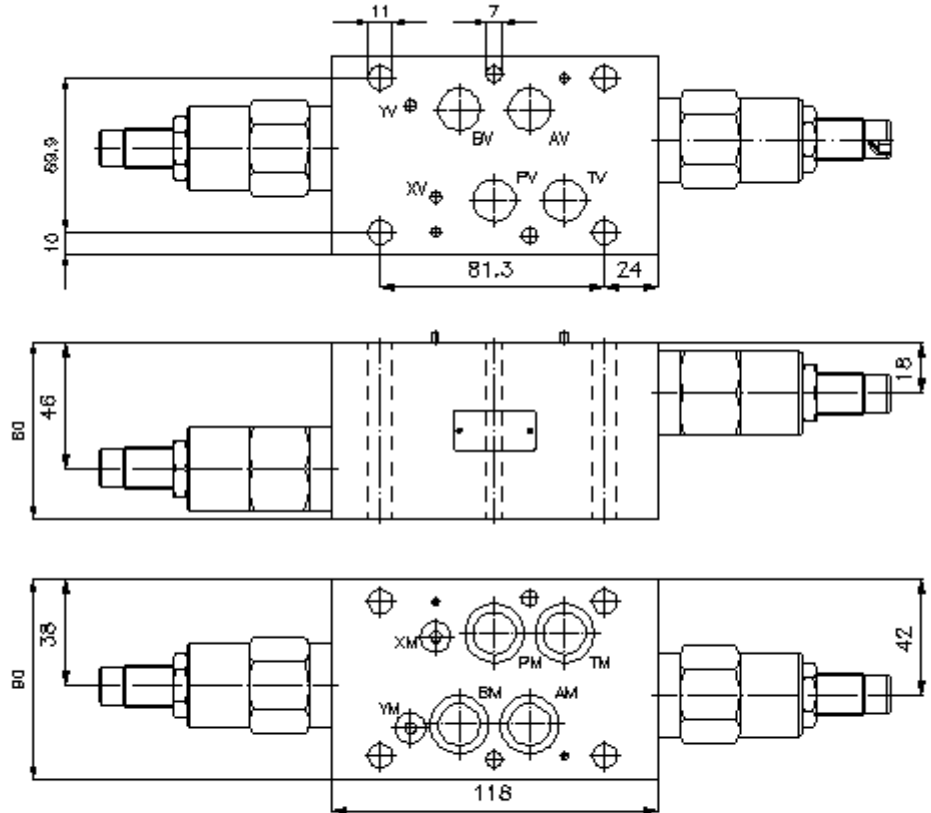
Nom. pressure:
350 bar

Nominal flow:
305 l/min.



IMAV-Hydraulik GmbH
Breite Strasse 10
D-40670 Meerbusch (Osterath)
Phone +49 (0)2159 - 9188.0
Fax +49 (0)2159 - 4242
E-mail: info@imav.com
Internet: <http://www.imav.com>

IZ-425-500-00
(Subject to change!)



**dual relief valve, CETOP 7
(sandwich plate) A to B+B to A
DDBVZ-16.-03S/..**



IMAV-Hydraulik GmbH
Breite Strasse 10
D-40670 Meerbusch (Osterath)
Phone +49 (0)2159 - 9188.0
Fax +49 (0)2159 - 4242
E-mail: info@imav.com
Internet: <http://www.imav.com>

IZ-425-500-00

(Subject to change!)

Ordering example:

DDBVZ - 16A - 03 S / 35
| | | | |
A **B** **C** **D** **E**

Model code:

- A design**
bi-directional relief-valve
with mounting interface DIN 24340 form A
sandwichplate design
- B size and material**
16A = aluminum (F37)
16S = steel (9SMnPb28K resp. GGG-40)
- C relief valve**
03 = RV3-16.-.. (direct acting) see data
sheet no.: [MP-150-161-00](#)

- D adjustment**
S = screw adjustment
- E pressure range**
RV3-16.-..
05 = 3.4 - 31 bar
13 = 20.7 - 90 bar
35 = 82.7 - 241 bar
50 = 137.9 - 350 bar

Technical Data:

nominal pressure: 250 bar (A)
350 bar (S)

weight: 3.8 / 7.9 kg (A/S)

included: 4 pcs. O-ring 22.22 x 2.62
2 pcs. O-ring 9.19 x 2.62