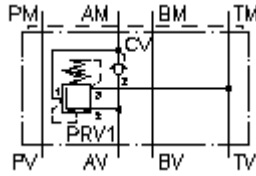


**3 way press. reg. valve CETOP 3
(sandwich plate) in A, direct acting
DMVZ-06S-A01./..**



IMAV-Hydraulik GmbH
Breite Strasse 10
D-40670 Meerbusch (Osterath)
Phone +49 (0)2159 - 9188.0
Fax +49 (0)2159 - 4242
E-mail: info@imav.com
Internet: <http://www.imav.com>

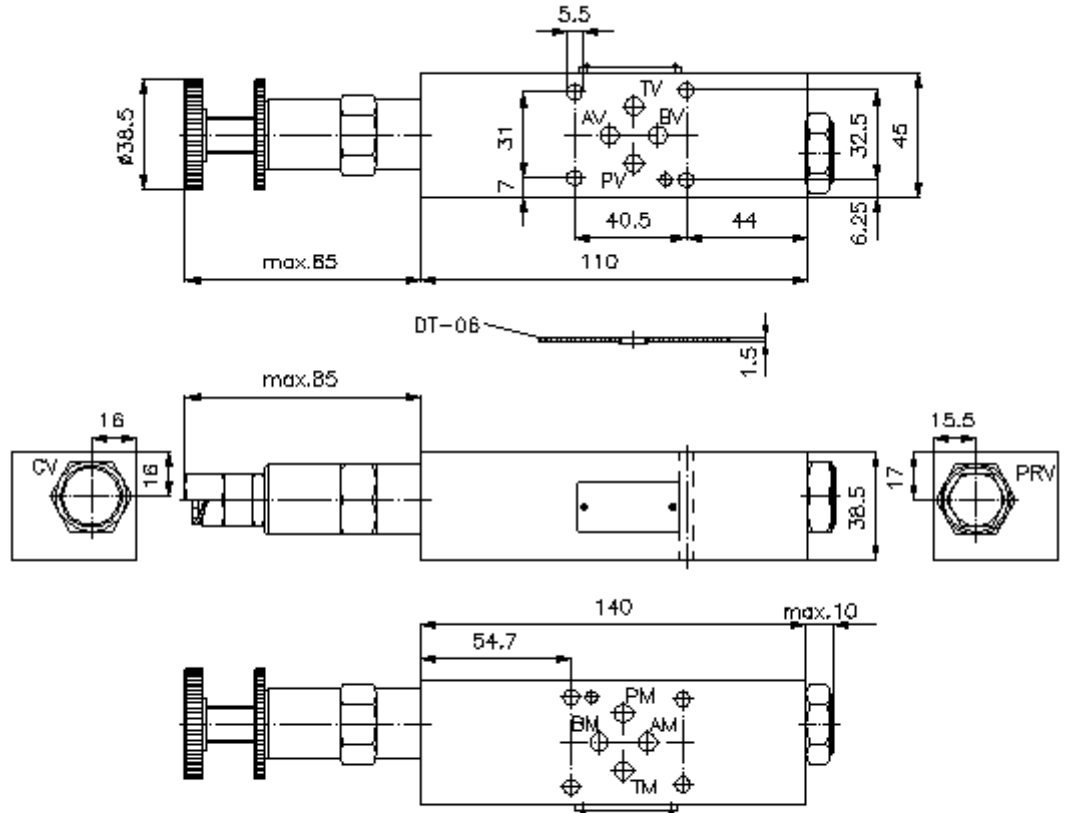
 **Symbol:**



Nom. pressure:
350 bar

Nominal flow:
15 l/min.

IZ-430-201-00
(Subject to change!)



3 way press. reg. valve CETOP 3 (sandwich plate) in A,direct acting DMVZ-06S-A01./..



IMAV-Hydraulik GmbH
Breite Strasse 10
D-40670 Meerbusch (Osterath)
Phone +49 (0)2159 - 9188.0
Fax +49 (0)2159 - 4242
E-mail: info@imav.com
Internet: <http://www.imav.com>

IZ-430-201-00

(Subject to change!)

Ordering example:

DMVZ - 06S - A 01 C / 12
| | | | | |
A **B** **C** **D** **E** **F**

Model code:

- | | |
|--|---|
| <p>A design pressure regulator valve adjustable direct acting spool type valve with mounting interface DIN 24340 form A sandwichplate design</p> <p>B size and material 06S = steel (9SMnPb28K resp. GGG-40)</p> <p>C function mode A = in A acting</p> <p>D pressure reducing valve 01 = PRV1-10.-.. (direct acting) see data sheet no.: MP-210-100-00 02 = PRV2-10.-.. (pilot operated) see data sheet no.: MP-210-101-00</p> <p>E adjustment C = cap K = handknob</p> | <p>F pressure range pressure range (PRV1) 02 = 3.4 - 14 bar 06 = 6.9 - 41 bar 12 = 13.8 - 86 bar 24 = 27.6 - 166 bar pressure range (PRV2) 03 = 3.4 - 21 bar 20 = 6.9 - 138 bar 35 = 17.2 - 241 bar</p> |
|--|---|

Technical Data:

nominal pressure: 350 bar
nominal flow: 15 l/min
weight: 1.9 kg
pressure regulator valve: PRV1-10.-.. see datasheet no. [MP-210-100-00](#)
included: DT-06 = sealing plate with vulcanized O-ring (Viton FPM)