

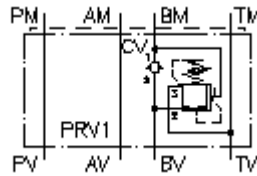
**3 way press. reg. valve CETOP 3
(sandwich plate) in B, direct acting
DMVZ-06S-B01./..**



Symbol:

Nom. pressure:
350 bar

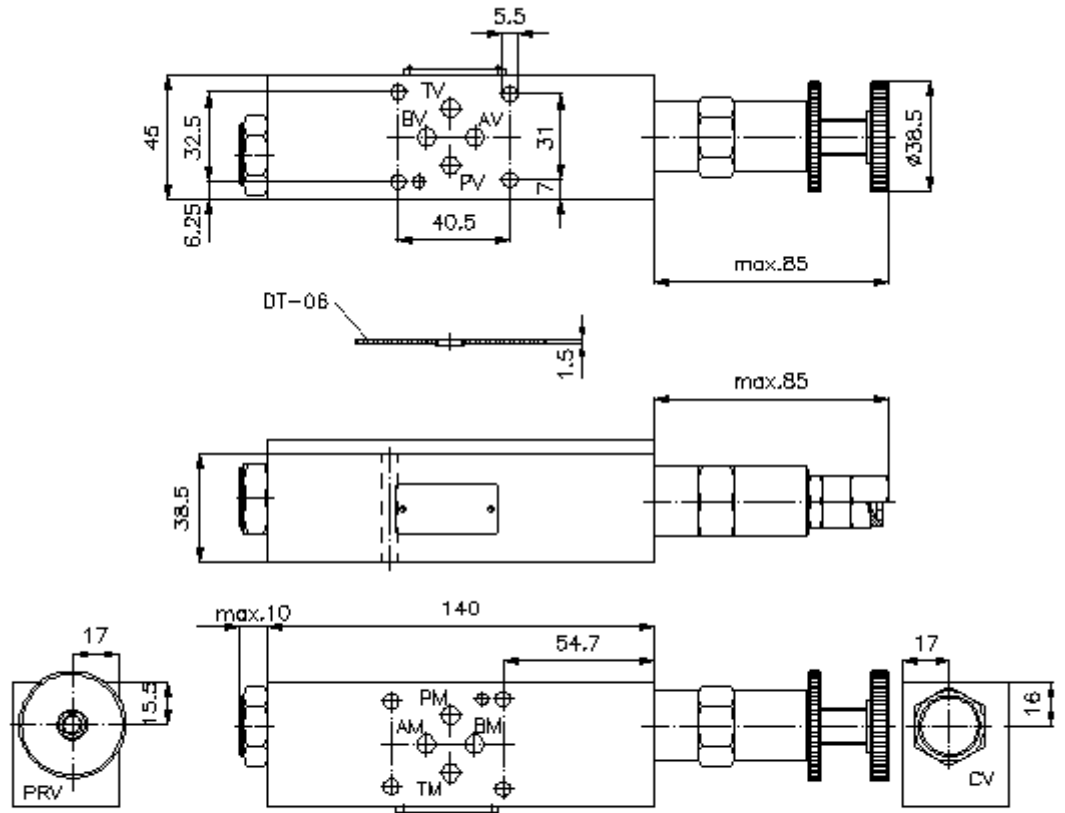
Nominal flow:
15 l/min.



IMAV-Hydraulik GmbH
Breite Strasse 10
D-40670 Meerbusch (Osterath)
Phone +49 (0)2159 - 9188.0
Fax +49 (0)2159 - 4242
E-mail: info@imav.com
Internet: <http://www.imav.com>

IZ-430-202-00

(Subject to change!)



3 way press. reg. valve CETOP 3 (sandwich plate) in B,direct acting DMVZ-06S-B01./..



IMAV-Hydraulik GmbH
Breite Strasse 10
D-40670 Meerbusch (Osterath)
Phone +49 (0)2159 - 9188.0
Fax +49 (0)2159 - 4242
E-mail: info@imav.com
Internet: <http://www.imav.com>

IZ-430-202-00

(Subject to change!)

Ordering example:

DMVZ - 06S - B 01 C / 12
| | | | |
A **B** **C** **D** **E** **F**

Model code:

- | | |
|--|---|
| <p>A design
pressure regulator valve
adjustable
direct acting
spool type valve
with mounting interface DIN 24340 form A
sandwichplate design</p> <p>B size and material
06S = steel (9SMnPb28K resp. GGG-40)</p> <p>C function mode
B = in B acting</p> <p>D pressure reducing valve
01 = PRV1-10.-.. (direct acting) see data
sheet no.: MP-210-100-00
02 = PRV2-10.-.. (pilot operated) see data
sheet no.: MP-210-101-00</p> <p>E adjustment
C = cap
K = handknob</p> | <p>F pressure range
pressure range (PRV1)
02 = 3.4 - 14 bar
06 = 6.9 - 41 bar
12 = 13.8 - 86 bar
24 = 27.6 - 166 bar
pressure range (PRV2)
03 = 3.4 - 21 bar
20 = 6.9 - 138 bar
35 = 17.2 - 241 bar</p> |
|--|---|

Technical Data:

nominal pressure: 350 bar
nominal flow: 15 l/min
weight: 1.9 kg
pressure regulator valve: PRV1-10.-.. see datasheet no. [MP-210-100-00](#)
included: DT-06 = sealing plate with vulcanized O-ring (Viton FPM)