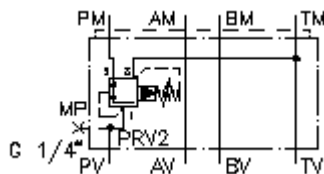


**3 way press. reg. valve CETOP 3  
(sandwich plate) in P,pilot operat.  
DMVZ-06S-P02./..**



IMAV-Hydraulik GmbH  
Breite Strasse 10  
D-40670 Meerbusch (Osterath)  
Phone +49 (0)2159 - 9188.0  
Fax +49 (0)2159 - 4242  
E-mail: [info@imav.com](mailto:info@imav.com)  
Internet: <http://www.imav.com>

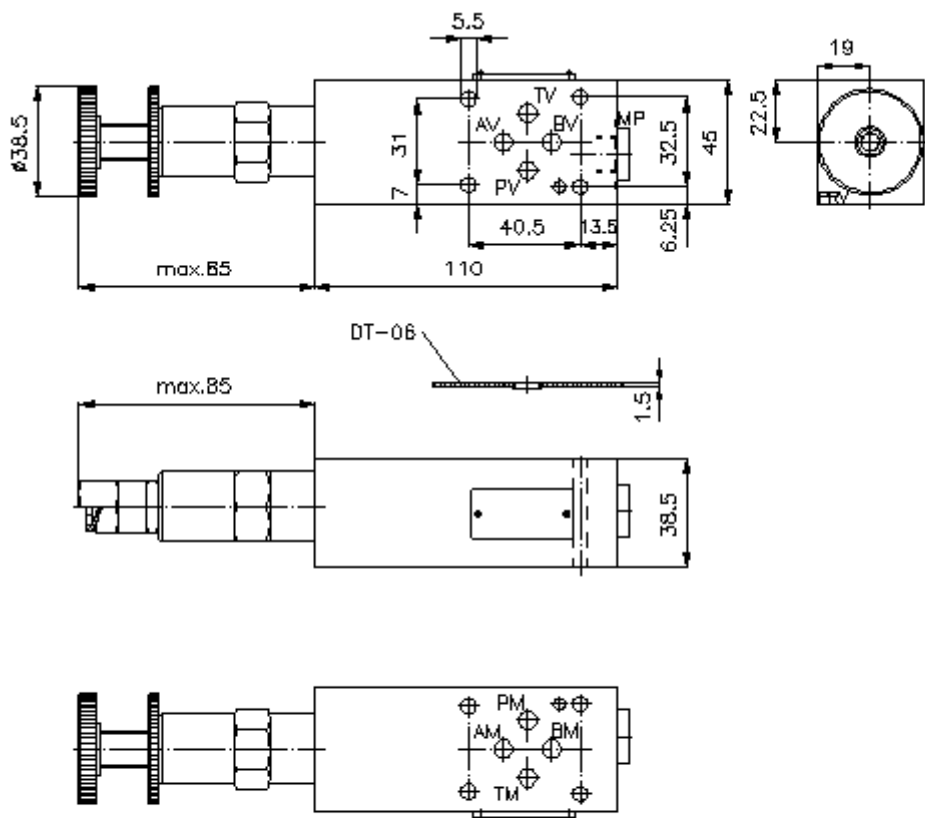
 **Symbol:**



**Nom. pressure:**  
350 bar

**Nominal flow:**  
40 l/min.

**IZ-430-203-00**  
(Subject to change!)



**3 way press. reg. valve CETOP 3  
(sandwich plate) in P,pilot operat.  
DMVZ-06S-P02./..**



IMAV-Hydraulik GmbH  
Breite Strasse 10  
D-40670 Meerbusch (Osterath)  
Phone +49 (0)2159 - 9188.0  
Fax +49 (0)2159 - 4242  
E-mail: [info@imav.com](mailto:info@imav.com)  
Internet: <http://www.imav.com>

**IZ-430-203-00**

(Subject to change!)

**Ordering example:**

DMVZ - 06S - P 02 C / 12  
| | | | | |  
**A B C D E F**

**Model code:**

- A design**  
pressure regulator valve  
adjustable  
pilot operated  
spool type valve  
with mounting interface DIN 24340 form A  
sandwichplate design
- B size and material**  
06S = steel (9SMnPb28K resp. GGG-40)
- C function mode**  
P = in P acting
- D pressure reducing valve**  
01 = PRV1-10.-.. (direct acting) see data  
sheet no.: [MP-210-100-00](#)  
02 = PRV2-10.-.. (pilot operated) see data  
sheet no.: [MP-210-101-00](#)
- E adjustment**  
C = cap  
K = handknob

- F pressure range**  
pressure range (PRV1)  
02 = 3.4 - 14 bar  
06 = 6.9 - 41 bar  
12 = 13.8 - 86 bar  
24 = 27.6 - 166 bar  
pressure range (PRV2)  
03 = 3.4 - 21 bar  
20 = 6.9 - 138 bar  
35 = 17.2 - 241 bar

**Technical Data:**

**nominal pressure:** 350 bar  
**nominal flow:** 40 l/min  
**weight:** 1.5 kg  
**pressure regulator valve:** PRV2-10.-.. see datasheet no. [MP-210-101-00](#)  
**included:** DT-06 = sealing plate with vulcanized O-ring (Viton FPM)