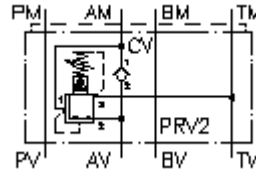


**3 way press. reg. valve CETOP 3
(sandwich plate) in A,pilot operat.
DMVZ-06S-A02./..**



IMAV-Hydraulik GmbH
Breite Strasse 10
D-40670 Meerbusch (Osterath)
Phone +49 (0)2159 - 9188.0
Fax +49 (0)2159 - 4242
E-mail: info@imav.com
Internet: <http://www.imav.com>

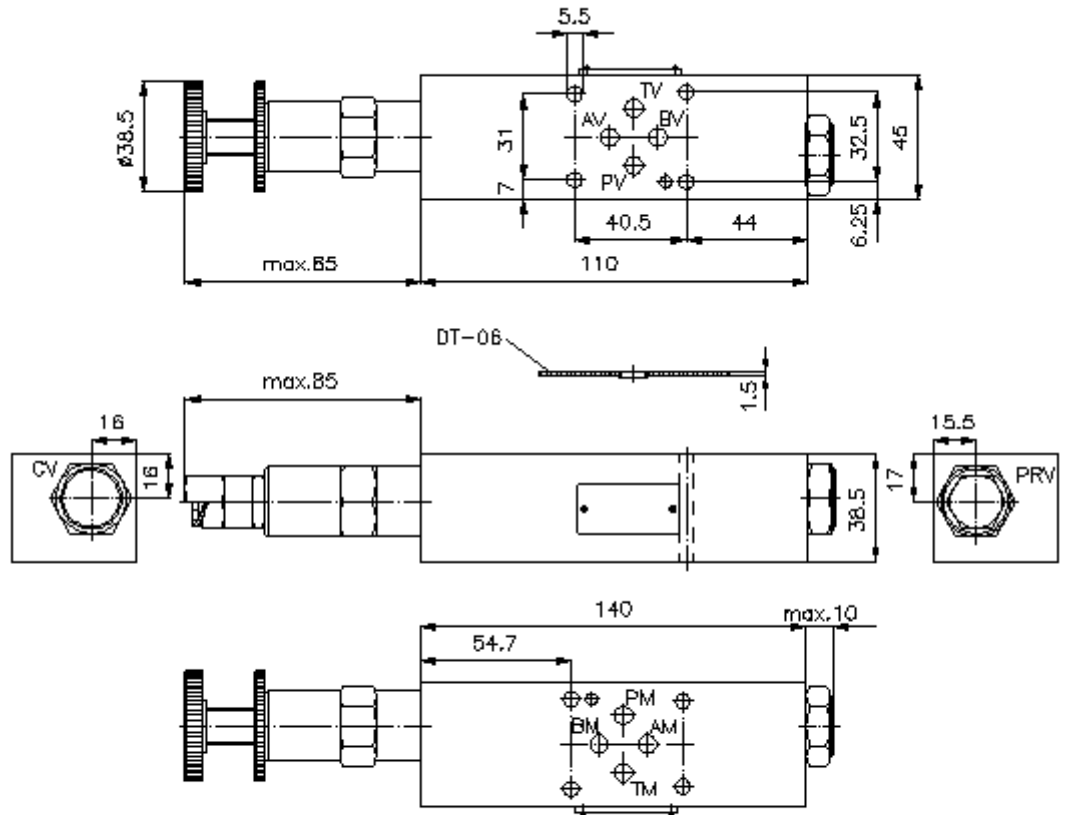
 **Symbol:**



Nom. pressure:
350 bar

Nominal flow:
40 l/min.

IZ-430-204-00
(Subject to change!)



**3 way press. reg. valve CETOP 3
(sandwich plate) in A,pilot operat.
DMVZ-06S-A02./..**



IMAV-Hydraulik GmbH
Breite Strasse 10
D-40670 Meerbusch (Osterath)
Phone +49 (0)2159 - 9188.0
Fax +49 (0)2159 - 4242
E-mail: info@imav.com
Internet: <http://www.imav.com>

IZ-430-204-00

(Subject to change!)

Ordering example:

DMVZ - 06S - A 02 C / 12
| | | | | |
A B C D E F

Model code:

- A design**
pressure regulator valve
adjustable
pilot operated
spool type valve
with mounting interface DIN 24340 form A
sandwichplate design
- B size and material**
06S = steel (9SMnPb28K resp. GGG-40)
- C function mode**
A = in A acting
- D pressure reducing valve**
01 = PRV1-10.-.. (direct acting) see data
sheet no.: [MP-210-100-00](#)
02 = PRV2-10.-.. (pilot operated) see data
sheet no.: [MP-210-101-00](#)
- E adjustment**
C = cap
K = handknob

- F pressure range**
pressure range (PRV1)
02 = 3.4 - 14 bar
06 = 6.9 - 41 bar
12 = 13.8 - 86 bar
24 = 27.6 - 166 bar
pressure range (PRV2)
03 = 3.4 - 21 bar
20 = 6.9 - 138 bar
35 = 17.2 - 241 bar

Technical Data:

nominal pressure: 350 bar
nominal flow: 40 l/min
weight: 1.9 kg
pressure regulator valve: PRV2-10.-.. see datasheet no. [MP-210-101-00](#)
included: DT-06 = sealing plate with vulcanized O-ring (Viton FPM)