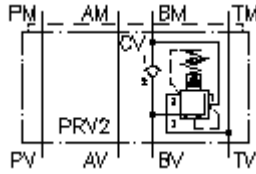


**3 way press. reg. valve CETOP 5
(sandwich plate) in B,pilot operat.
DMVZ-10.-B02./..**



Symbol:



Nom. pressure:
350 bar

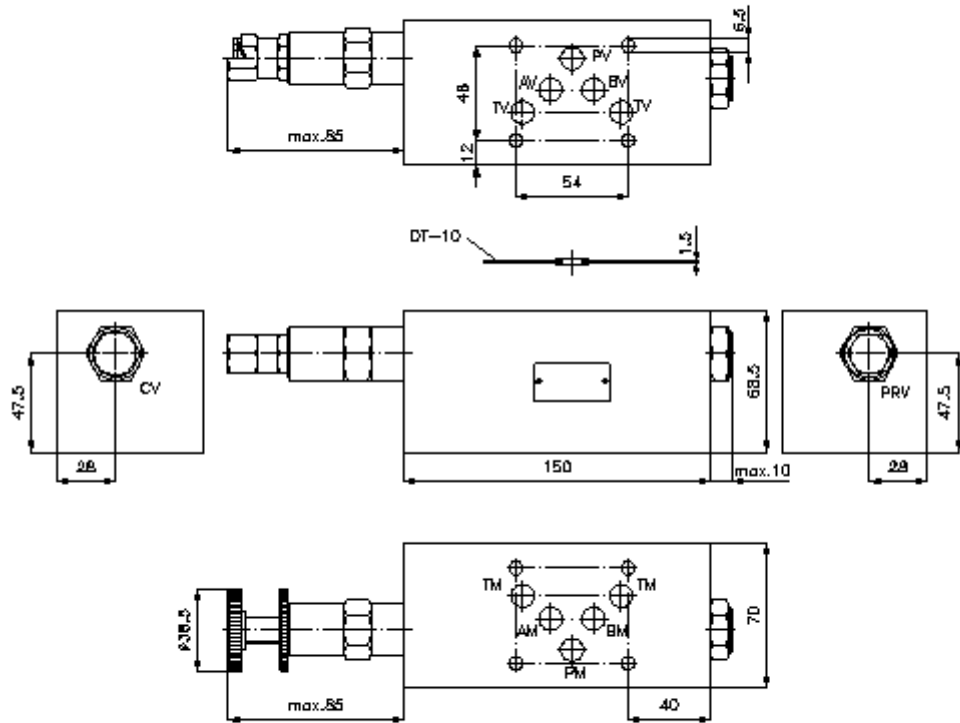
Nominal flow:
40 l/min.



IMAV-Hydraulik GmbH
Breite Strasse 10
D-40670 Meerbusch (Osterath)
Phone +49 (0)2159 - 9188.0
Fax +49 (0)2159 - 4242
E-mail: info@imav.com
Internet: <http://www.imav.com>

IZ-430-402-00

(Subject to change!)



**3 way press. reg. valve CETOP 5
(sandwich plate) in B,pilot operat.
DMVZ-10.-B02./..**



IMAV-Hydraulik GmbH
Breite Strasse 10
D-40670 Meerbusch (Osterath)
Phone +49 (0)2159 - 9188.0
Fax +49 (0)2159 - 4242
E-mail: info@imav.com
Internet: <http://www.imav.com>

IZ-430-402-00

(Subject to change!)

Ordering example:

DMVZ - 10A - B 02 C / 12
| | | | | |
A **B** **C** **D** **E** **F**

Model code:

- | | |
|--|--|
| <p>A design
pressure regulator valve
adjustable
pilot operated
spool type valve
with mounting interface DIN 24340 form A
sandwichplate design</p> <p>B size and material
10A = aluminum (F37)
10S = steel (9SMnPb28K resp. GGG-40)</p> | <p>C function mode
B = in B acting</p> <p>D pressure reducing valve
02 = PRV2-10.-.. (pilot operated) see data
sheet no.: MP-210-101-00</p> <p>E adjustment
C = cap
K = handknob</p> <p>F pressure range (PRV2)
03 = 3.4 - 21 bar
20 = 6.9 - 138 bar
35 = 17.2 - 241 bar</p> |
|--|--|

Technical Data:

nominal pressure:	250 bar (A) 350 bar (S)
nominal flow:	40 l/min
weight:	2.2 / 5.6 kg (A/S)
pressure regulator valve:	PRV2-10.-.. see datasheet no. MP-210-101-00
included:	DT-10 = sealing plate with vulcanized O-ring (Viton FPM)