

**3 way press. reg. valve CETOP 5  
(sandwich plate) in P,pilot operat.  
DMVZ-10.-PRRS./..**



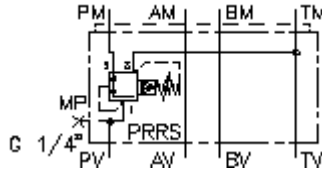
IMAV-Hydraulik GmbH  
Breite Strasse 10  
D-40670 Meerbusch (Osterath)  
Phone +49 (0)2159 - 9188.0  
Fax +49 (0)2159 - 4242  
E-mail: [info@imav.com](mailto:info@imav.com)  
Internet: <http://www.imav.com>



**Symbol:**

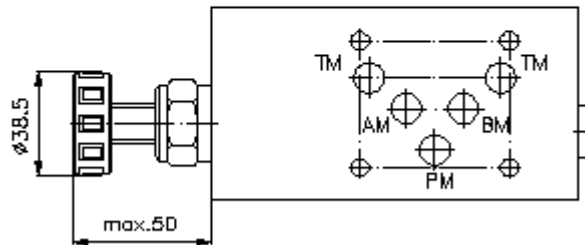
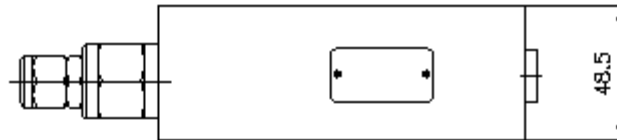
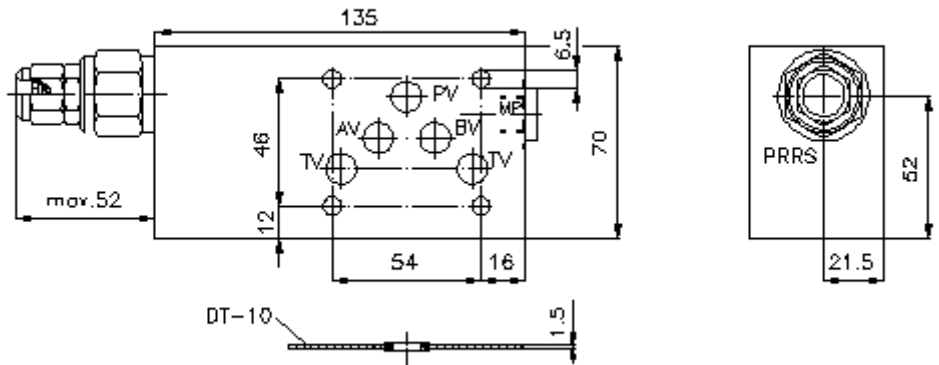
**Nom. pressure:**  
350 bar

**Nominal flow:**  
45 l/min.



**IZ-430-450-00**

(Subject to change!)



**3 way press. reg. valve CETOP 5  
(sandwich plate) in P,pilot operat.  
DMVZ-10.-PRS./..**



IMAV-Hydraulik GmbH  
Breite Strasse 10  
D-40670 Meerbusch (Osterath)  
Phone +49 (0)2159 - 9188.0  
Fax +49 (0)2159 - 4242  
E-mail: [info@imav.com](mailto:info@imav.com)  
Internet: <http://www.imav.com>

**IZ-430-450-00**

(Subject to change!)

**Ordering example:**

DMVZ - 10A - P RS C / 30  
| | | | |  
**A** **B** **C** **D** **E** **F**

**Model code:**

- |  |  |
|--|--|
| <p><b>A</b> <b>design</b><br/>pressure regulator valve<br/>adjustable<br/>pilot operated<br/>spool type valve<br/>with mounting interface DIN 24340 form A<br/>sandwichplate design</p> <p><b>B</b> <b>size and material</b><br/>10A = aluminum (F37)<br/>10S = steel (9SMnPb28K resp. GGG-40)</p> | <p><b>C</b> <b>function mode</b><br/>P = in P acting</p> <p><b>D</b> <b>pressure reducing valve</b><br/>RS = PRRS-10.-.. (pilot operated) see data<br/>sheet no.: <a href="#">CP-210-101-00</a></p> <p><b>E</b> <b>adjustment</b><br/>C = cap<br/>K = handknob</p> <p><b>F</b> <b>pressure range (PRRS)</b><br/>15 = 3.4 - 105 bar<br/>30 = 3.4 - 210 bar<br/>50 = 3.4 - 350 bar</p> |
|--|--|

**Technical Data:**

**nominal pressure:** 250 bar (A)  
350 bar (S)

**nominal flow:** 45 l/min

**weight:** 1.3 / 3.6 kg (A/S)

**pressure regulator valve:** PRRS-10.-.. see datasheet no. [CP-210-101-00](#)

**included:** DT-10 = sealing plate with vulcanized O-ring (Viton FPM)