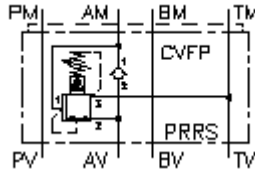


**3 way press. reg. valve CETOP 5
(sandwich plate) in A,pilot operat.
DMVZ-10.-ARS./..**



IMAV-Hydraulik GmbH
Breite Strasse 10
D-40670 Meerbusch (Osterath)
Phone +49 (0)2159 - 9188.0
Fax +49 (0)2159 - 4242
E-mail: info@imav.com
Internet: <http://www.imav.com>

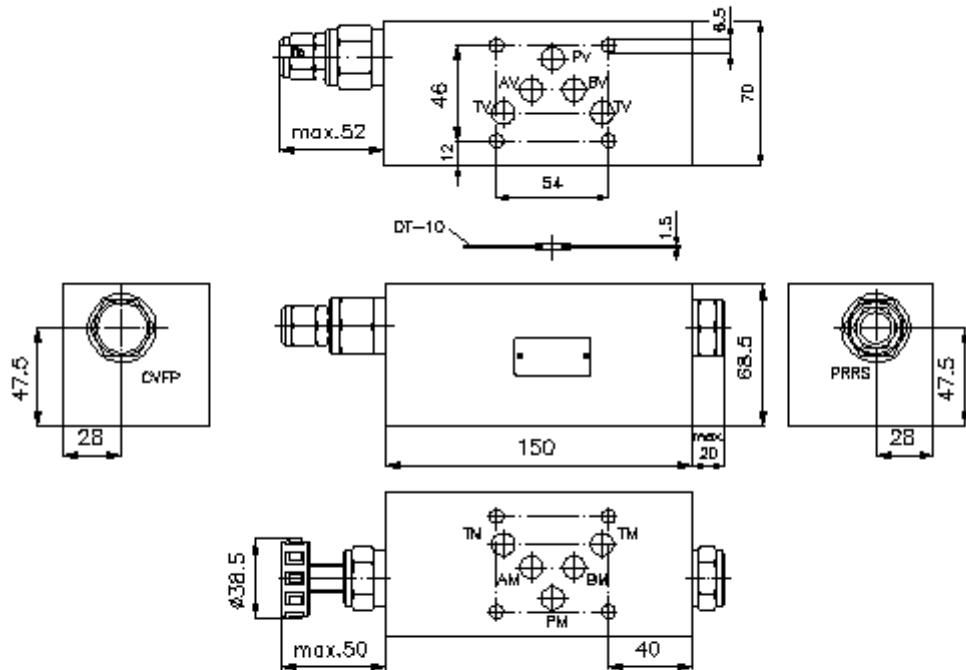
 **Symbol:**



Nom. pressure:
350 bar

Nominal flow:
45 l/min.

IZ-430-451-00
(Subject to change!)



**3 way press. reg. valve CETOP 5
(sandwich plate) in A,pilot operat.
DMVZ-10.-ARS./..**



IMAV-Hydraulik GmbH
Breite Strasse 10
D-40670 Meerbusch (Osterath)
Phone +49 (0)2159 - 9188.0
Fax +49 (0)2159 - 4242
E-mail: info@imav.com
Internet: <http://www.imav.com>

IZ-430-451-00

(Subject to change!)

Ordering example:

DMVZ - 10A - A RS C / 30
| | | | |
A **B** **C** **D** **E** **F**

Model code:

- | | |
|--|--|
| <p>A design
pressure regulator valve
adjustable
pilot operated
spool type valve
with mounting interface DIN 24340 form A
sandwichplate design</p> <p>B size and material
10A = aluminum (F37)
10S = steel (9SMnPb28K resp. GGG-40)</p> | <p>C function mode
A = in A acting</p> <p>D pressure reducing valve
RS = PRRS-10.-.. (pilot operated) see data
sheet no.: CP-210-101-00</p> <p>E adjustment
C = cap
K = handknob</p> <p>F pressure range (PRRS)
15 = 3.4 - 105 bar
30 = 3.4 - 210 bar
50 = 3.4 - 350 bar</p> |
|--|--|

Technical Data:

- | | |
|----------------------------------|---|
| nominal pressure: | 250 bar (A)
350 bar (S) |
| nominal flow: | 45 l/min |
| weight: | 2.2 / 5.6 kg (A/S) |
| pressure regulator valve: | PRRS-10.-.. see datasheet no. CP-210-101-00 |
| included: | DT-10 = sealing plate with vulcanized O-ring (Viton FPM) |