

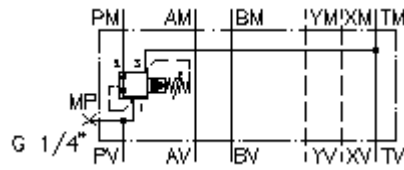
**3 way press. reg. valve CETOP 7  
(sandwich plate) in P,pilot operat.  
DMVZ-16.-P02./..**



**Symbol:**

**Nom. pressure:**  
350 bar

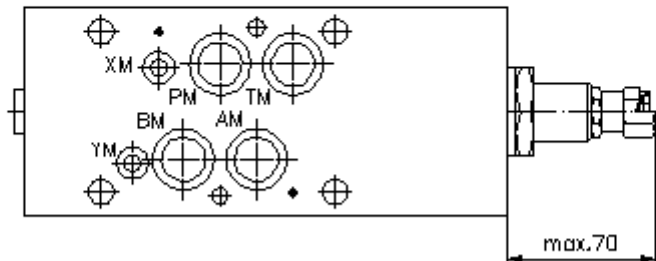
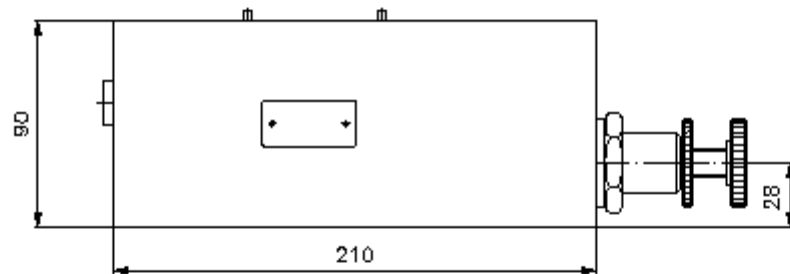
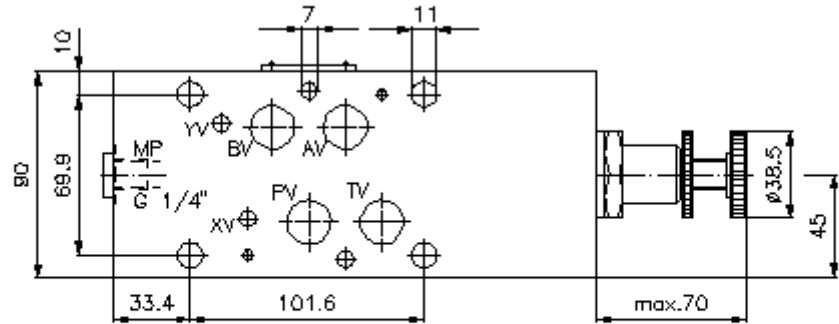
**Nominal flow:**  
150 l/min.



IMAV-Hydraulik GmbH  
Breite Strasse 10  
D-40670 Meerbusch (Osterath)  
Phone +49 (0)2159 - 9188.0  
Fax +49 (0)2159 - 4242  
E-mail: [info@imav.com](mailto:info@imav.com)  
Internet: <http://www.imav.com>

**IZ-440-500-00**

(Subject to change!)



**3 way press. reg. valve CETOP 7  
(sandwich plate) in P,pilot operat.  
DMVZ-16.-P02./..**



IMAV-Hydraulik GmbH  
Breite Strasse 10  
D-40670 Meerbusch (Osterath)  
Phone +49 (0)2159 - 9188.0  
Fax +49 (0)2159 - 4242  
E-mail: [info@imav.com](mailto:info@imav.com)  
Internet: <http://www.imav.com>

**IZ-440-500-00**

(Subject to change!)

**Ordering example:**

DMVZ - 16A - P 02 C / 60  
| | | | | |  
**A B C D E F**

**Model code:**

- |  |  |
|--|--|
| <p><b>A design</b><br/>pressure regulator valve<br/>adjustable<br/>pilot operated<br/>spool type valve<br/>with mounting interface DIN 24340 form A<br/>sandwichplate design</p> <p><b>B size and material</b><br/>16A = aluminum (F37)<br/>16S = steel (9SMnPb28K resp. GGG-40)</p> | <p><b>C function mode</b><br/>P = in P acting</p> <p><b>D pressure reducing valve</b><br/>02 = PRV2-16.-... (pilot operated) see data<br/>sheet no.: <a href="#">MP-240-161-00</a></p> <p><b>E adjustment</b><br/>C = cap<br/>K = handknob</p> <p><b>F pressure range (PRV2)</b><br/>30 = 34.5 - 210 bar<br/>60 = 68.9 - 414 bar</p> |
|--|--|

**Technical Data:**

<b>nominal pressure:</b>	250 bar (A) 350 bar (S)
<b>nominal flow:</b>	150 l/min
<b>weight:</b>	4.8 / 13.4 kg (A/S)
<b>pressure regulator valve:</b>	PRV2-16.-... see datasheet no. <a href="#">MP-240-161-00</a>
<b>included:</b>	4 pcs. O-ring 22.22 x 2.62 2 pcs. O-ring 9.19 x 2.62