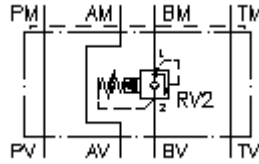


**relief valve CETOP 3  
(sandwich plate) in B,pilot operat.  
VSZ-06.-B.../..**



IMAV-Hydraulik GmbH  
Breite Strasse 10  
D-40670 Meerbusch (Osterath)  
Phone +49 (0)2159 - 9188.0  
Fax +49 (0)2159 - 4242  
E-mail: [info@imav.com](mailto:info@imav.com)  
Internet: <http://www.imav.com>

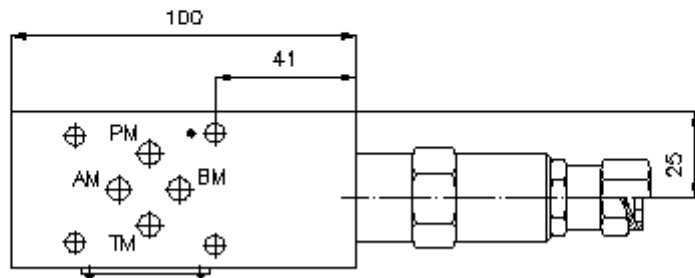
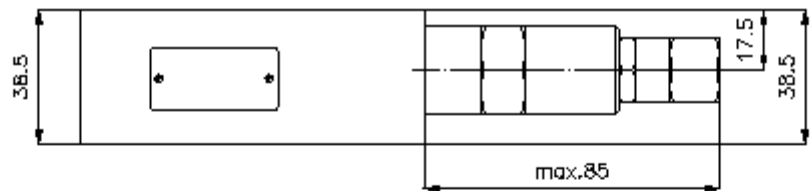
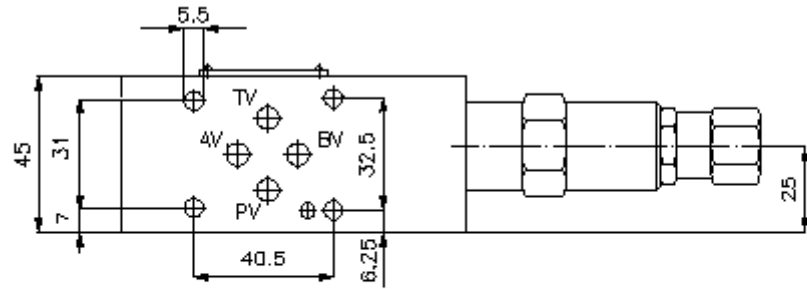
 **Symbol:**



**Nom. pressure:**  
350 bar

**Nominal flow:**  
60 l/min.

**IZ-510-201-00**  
(Subject to change!)



**relief valve CETOP 3  
(sandwich plate) in B,pilot operat.  
VSZ-06.-B.../..**



IMAV-Hydraulik GmbH  
Breite Strasse 10  
D-40670 Meerbusch (Osterath)  
Phone +49 (0)2159 - 9188.0  
Fax +49 (0)2159 - 4242  
E-mail: [info@imav.com](mailto:info@imav.com)  
Internet: <http://www.imav.com>

**IZ-510-201-00**

(Subject to change!)

**Ordering example:**

VSZ - 06A - B 02 C / 35  
| | | | | |  
**A B C D E F**

**Model code:**

- A design**  
backpressure valve  
adjustable  
pilot operated  
poppet type valve  
with mounting interface DIN 24340 form A  
sandwichplate design
- B size and material**  
06A = aluminum (F37)  
06S = steel (9SMnPb28K resp. GGG-40)

- C function mode**  
B = in B acting
- D relief valve**  
02 = RV2-10.-.. (pilot operated) see data  
sheet no.: [MP-160-101-00](#)
- E adjustment**  
C = cap
- F pressure range**  
03 = 3.4 - 21 bar  
20 = 6.9 - 138 bar  
35 = 17.2 - 241 bar  
50 = 34.5 - 350 bar

**Technical Data:**

- nominal pressure:** 250 bar (A)  
350 bar (S)
- nominal flow:** 60 l/min
- weight:** 0.7 / 1.3 kg (A/S)
- relief valve:** RV2-10.-.. see datasheet no. [MP-160-101-00](#)
- included:** DT-06 = sealing plate with vulcanized O-ring (Viton FPM)