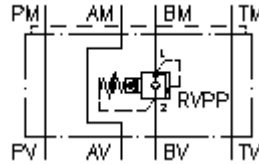


**relief valve CETOP 3
(sandwich plate) in B,pilot operat.
VSZ-06.-BPP./..**



IMAV-Hydraulik GmbH
Breite Strasse 10
D-40670 Meerbusch (Osterath)
Phone +49 (0)2159 - 9188.0
Fax +49 (0)2159 - 4242
E-mail: info@imav.com
Internet: <http://www.imav.com>

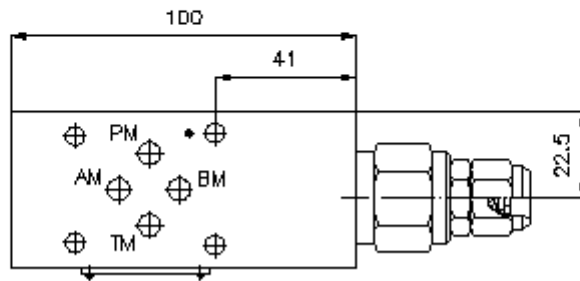
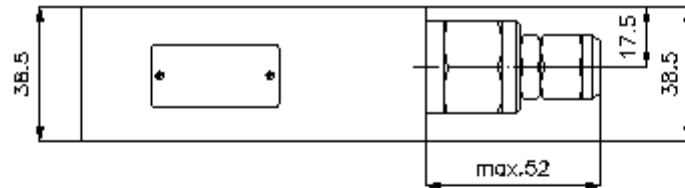
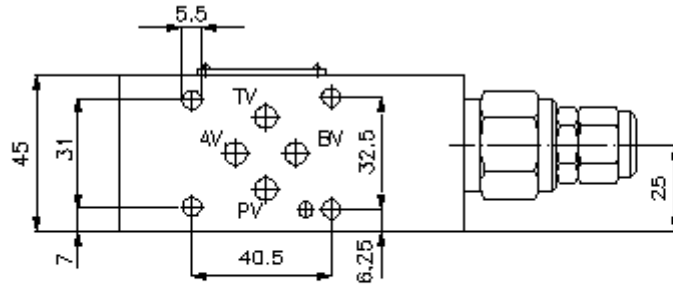
 **Symbol:**



Nom. pressure:
350 bar

Nominal flow:
60 l/min.

IZ-510-251-00
(Subject to change!)



**relief valve CETOP 3
(sandwich plate) in B,pilot operat.
VSZ-06.-BPP./..**



IMAV-Hydraulik GmbH
Breite Strasse 10
D-40670 Meerbusch (Osterath)
Phone +49 (0)2159 - 9188.0
Fax +49 (0)2159 - 4242
E-mail: info@imav.com
Internet: <http://www.imav.com>

IZ-510-251-00

(Subject to change!)

Ordering example:

VSZ - 06A - B PP C / 30
| | | | | |
A B C D E F

Model code:

- | | |
|---|---|
| <p>A design
backpressure valve
adjustable
pilot operated
poppet type valve
with mounting interface DIN 24340 form A
sandwichplate design</p> <p>B size and material
06A = aluminum (F37)
06S = steel (9SMnPb28K resp. GGG-40)</p> | <p>C function mode
B = in B acting</p> <p>D relief valve
PP = RVPP-10.-.. (pilot operated) see data
sheet no.: CP-130-101-00</p> <p>E adjustment
C = cap</p> <p>F pressure range
15 = 3.4 - 105 bar
30 = 3.4 - 210 bar
50 = 3.4 - 350 bar</p> |
|---|---|

Technical Data:

- | | |
|--------------------------|---|
| nominal pressure: | 250 bar (A)
350 bar (S) |
| nominal flow: | 60 l/min |
| weight: | 0.7 / 1.3 kg (A/S) |
| relief valve: | RVPP-10.-.. see datasheet no. CP-130-101-00 |
| included: | DT-06 = sealing plate with vulcanized O-ring (Viton FPM) |