

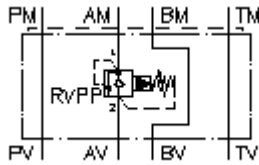
**relief valve CETOP 5  
(sandwich plate) in A,pilot operat.  
VSZ-10.-APP./..**



**Symbol:**

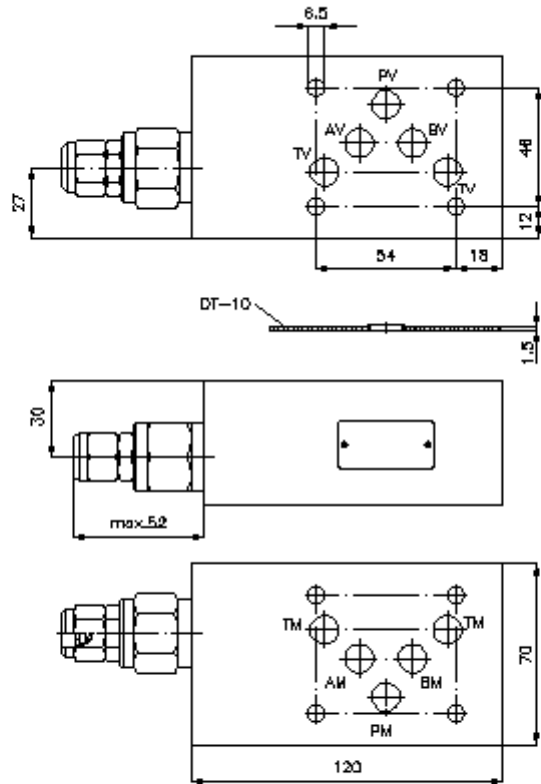
**Nom. pressure:**  
350 bar

**Nominal flow:**  
95 l/min.



IMAV-Hydraulik GmbH  
Breite Strasse 10  
D-40670 Meerbusch (Osterath)  
Phone +49 (0)2159 - 9188.0  
Fax +49 (0)2159 - 4242  
E-mail: [info@imav.com](mailto:info@imav.com)  
Internet: <http://www.imav.com>

**IZ-510-450-00**  
(Subject to change!)



**relief valve CETOP 5  
(sandwich plate) in A,pilot operat.  
VSZ-10.-APP./..**



IMAV-Hydraulik GmbH  
Breite Strasse 10  
D-40670 Meerbusch (Osterath)  
Phone +49 (0)2159 - 9188.0  
Fax +49 (0)2159 - 4242  
E-mail: [info@imav.com](mailto:info@imav.com)  
Internet: <http://www.imav.com>

**IZ-510-450-00**

(Subject to change!)

**Ordering example:**

VSZ - 10A - A PP C / 30  
| | | | | |  
**A** **B** **C** **D** **E** **F**

**Model code:**

- |   |   |
|---|---|
| <p><b>A</b> <b>design</b><br/>backpressure valve<br/>adjustable<br/>pilot operated<br/>poppet type valve<br/>with mounting interface DIN 24340 form A<br/>sandwichplate design</p> <p><b>B</b> <b>size and material</b><br/>10A = aluminum (F37)<br/>10S = steel (9SMnPb28K resp. GGG-40)</p> | <p><b>C</b> <b>function mode</b><br/>A = in A acting</p> <p><b>D</b> <b>relief valve</b><br/>PP = RVPP-10.-.. (pilot operated) see data<br/>sheet no.: <a href="#">CP-130-101-00</a></p> <p><b>E</b> <b>adjustment</b><br/>C = cap</p> <p><b>F</b> <b>pressure range</b><br/>15 = 3.4 - 105 bar<br/>30 = 3.4 - 210 bar<br/>50 = 3.4 - 350 bar</p> |
|---|---|

**Technical Data:**

**nominal pressure:** 250 bar (A)  
350 bar (S)

**nominal flow:** 95 l/min

**weight:** 1.8 / 3.4 kg (A/S)

**relief valve:** RVPP-10.-.. see datasheet no. [CP-130-101-00](#)

**included:** DT-10 = sealing plate with vulcanized O-ring (Viton FPM)