

**counterbalance valve, CETOP 3
(sandwich plate) in A+B
SBLZ-06.-A+B..CA/..**



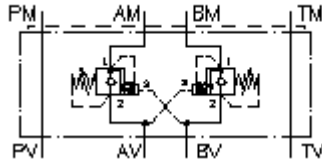
IMAV-Hydraulik GmbH
Breite Strasse 10
D-40670 Meerbusch (Osterath)
Phone +49 (0)2159 - 9188.0
Fax +49 (0)2159 - 4242
E-mail: info@imav.com
Internet: <http://www.imav.com>



Symbol:

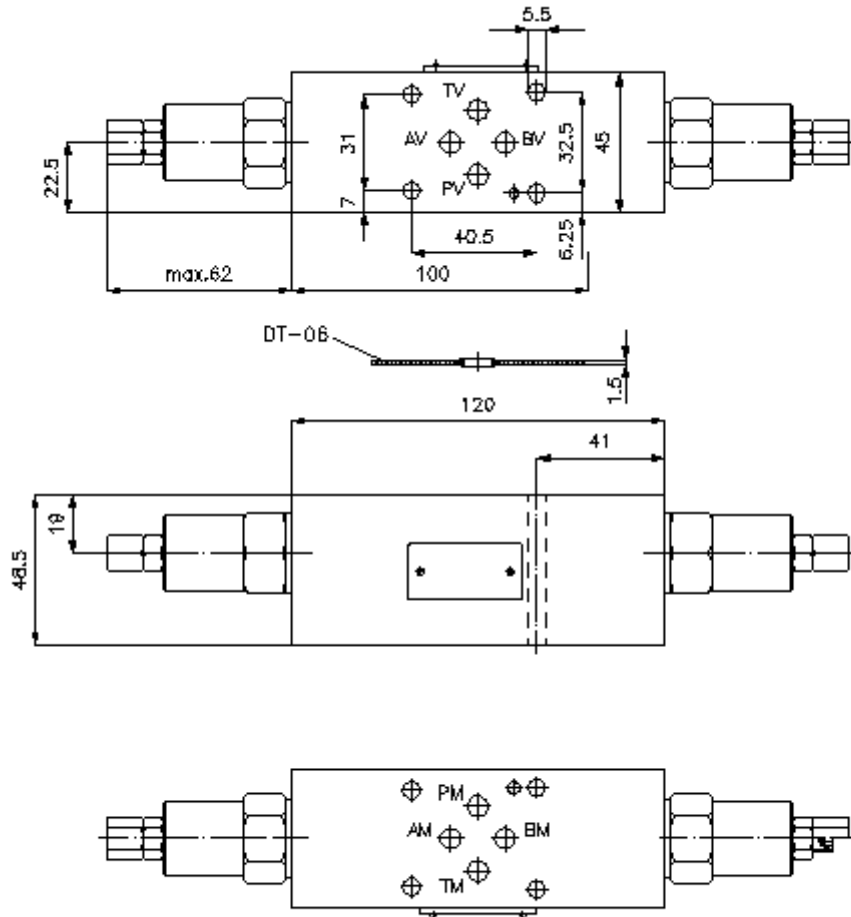
Nom. pressure:
350 bar

Nominal flow:
60 l/min.



IZ-520-202-00

(Subject to change!)



**counterbalance valve, CETOP 3
(sandwich plate) in A+B
SBLZ-06.-A+B..CA/..**



IMAV-Hydraulik GmbH
Breite Strasse 10
D-40670 Meerbusch (Osterath)
Phone +49 (0)2159 - 9188.0
Fax +49 (0)2159 - 4242
E-mail: info@imav.com
Internet: <http://www.imav.com>

IZ-520-202-00

(Subject to change!)

Ordering example:

SBLZ - 06A - A+B 01 C A / 50
| | | | | | |
A B C D E F G

Model code:

- | | |
|--|---|
| <p>A design
counter balance valve
with mounting interface DIN 24340 form A
sandwichplate design</p> <p>B size and material
06A = aluminum (F37)
06S = steel (9SMnPb28K resp. GGG-40)</p> <p>C function mode
A+B = in A and B acting</p> | <p>D counter balance valve
01 = CBV1-10.-.. (pilot ratio 4:1)
02 = CBV2-10.-.. (pilot ratio 10:1)</p> <p>E adjustment
C = cap</p> <p>F check valve free flow crack pressure
A = 1.40 bar</p> <p>G pressure range (CBV1 + CBV2)
30 = 62.1 - 210 bar
50 = 186.2 - 350 bar</p> |
|--|---|

Technical Data:

- note:** left turn (counter clockwise) = increasing pressure
right turn (clockwise) = reducing pressure
- nominal pressure:** 350 bar (S)
250 bar (A)
- nominal flow:** 60 l/min
- weight:** 1.1 / 2.4 kg (A/S)
- counter balance valve:** CBV1-10.-.. resp. CBV2-10.-.. see datasheet no. MC-410-101-00
- included:** DT-06 = sealing plate with vulcanized O-ring (Viton FPM)