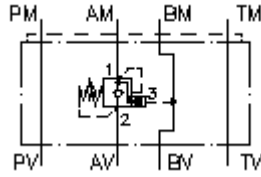


**counterbalance valve, CETOP 5
(sandwich plate) in A
SBLZ-10.-AP.C/..**



IMAV-Hydraulik GmbH
Breite Strasse 10
D-40670 Meerbusch (Osterath)
Phone +49 (0)2159 - 9188.0
Fax +49 (0)2159 - 4242
E-mail: info@imav.com
Internet: <http://www.imav.com>

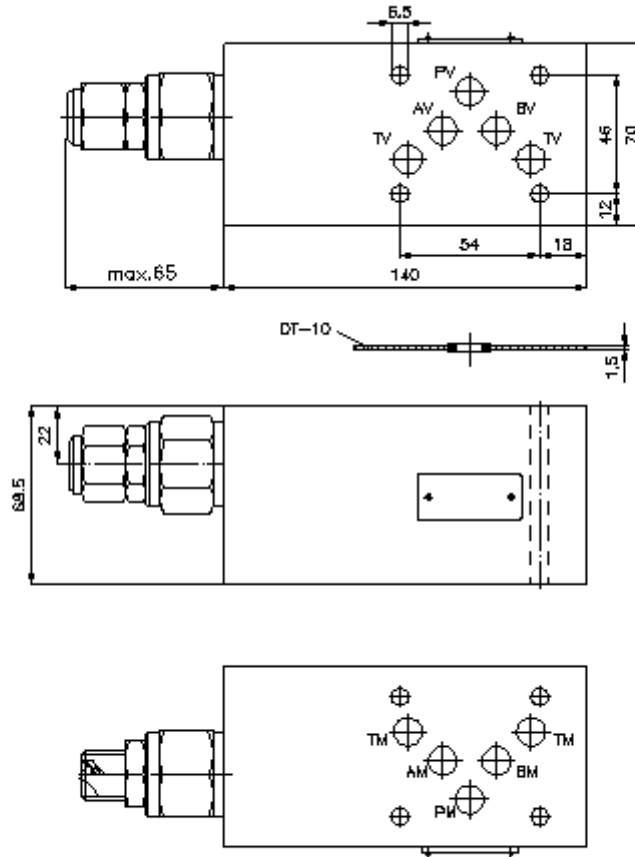
 **Symbol:**



Nom. pressure:
275 bar

Nominal flow:
120 l/min.

IZ-530-450-00
(Subject to change!)



**counterbalance valve, CETOP 5
(sandwich plate) in A
SBLZ-10.-AP.C/..**



IMAV-Hydraulik GmbH
Breite Strasse 10
D-40670 Meerbusch (Osterath)
Phone +49 (0)2159 - 9188.0
Fax +49 (0)2159 - 4242
E-mail: info@imav.com
Internet: <http://www.imav.com>

IZ-530-450-00

(Subject to change!)

Ordering example:

SBLZ - 10A - A PA C / 30
| | | | |
A **B** **C** **D** **E** **F**

Model code:

- A design**
counter balance valve
with mounting interface DIN 24340 form A
sandwichplate design
- B size and material**
10A = aluminum (F37)
10S = steel (9SMnPb28K resp. GGG-40)
- C function mode**
A = in A acting (return)
- D counter balance valve (pilot ratio 4:1)**
PA = CBPA-12.-.. (without seals at the
piston)
PS = CBPS-12.-.. (with seals at the piston)

- E adjustment**
C = cap
S = screw adjustment
- F pressure range (CBPA, CBPS)**
15 = 3.4 - 105 bar
30 = 6.9 -210 bar
40 = 41.4 - 276 bar

Technical Data:

- nominal pressure:** 250 bar (A)
275 bar (S)
- nominal flow:** 120 l/min
- weight:** 2.1 kg
- counter balance valve:** CBP.-12.-.. see datasheet no. CC-410-121-00
- included:** DT-10 = sealing plate with vulcanized O-ring (Viton FPM)