

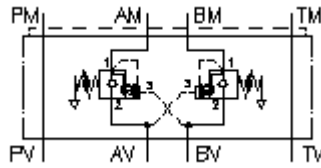
**counterbalance valve, CETOP 5
(sandwich plate)in A+B(vent.spring)
SBLZ-10.-A+BPGC/..**



Symbol:

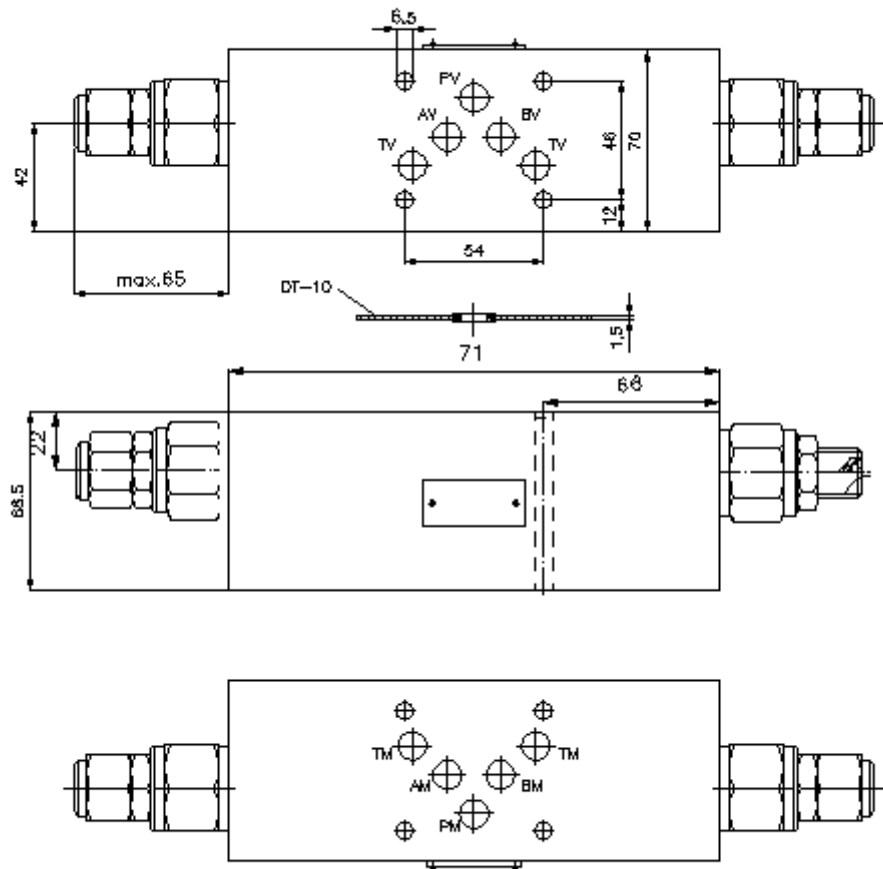
Nom. pressure:
275 bar

Nominal flow:
120 l/min.



IMAV-Hydraulik GmbH
Breite Strasse 10
D-40670 Meerbusch (Osterath)
Phone +49 (0)2159 - 9188.0
Fax +49 (0)2159 - 4242
E-mail: info@imav.com
Internet: <http://www.imav.com>

IZ-530-455-00
(Subject to change!)



**counterbalance valve, CETOP 5
(sandwich plate)in A+B(vent.spring)
SBLZ-10.-A+BPGC/..**



IMAV-Hydraulik GmbH
Breite Strasse 10
D-40670 Meerbusch (Osterath)
Phone +49 (0)2159 - 9188.0
Fax +49 (0)2159 - 4242
E-mail: info@imav.com
Internet: <http://www.imav.com>

IZ-530-455-00

(Subject to change!)

Ordering example:

SBLZ - 10A - A+B PG C / 30
| | | | | |
A **B** **C** **D** **E** **F**

Model code:

- | | |
|--|---|
| <p>A design
counter balance valve
with mounting interface DIN 24340 form A
sandwichplate design</p> <p>B size and material
10A = aluminum (F37)
10S = steel (9SMnPb28K resp. GGG-40)</p> <p>C function mode
A+B = in A and B acting</p> | <p>D counter balance valve (pilot ratio 4:1)
PG = CBPG-12.-.. (vented spring)</p> <p>E adjustment
C = cap
S = screw adjustment</p> <p>F pressure range (CBPG)
15 = 3.4 - 105 bar
30 = 6.9 -210 bar
40 = 41.4 - 276 bar</p> |
|--|---|

Technical Data:

- nominal pressure:** 250 bar (A)
275 bar (S)
- nominal flow:** 120 l/min
- weight:** 2.8 kg
- counter balance valve:** CBPG-12.-.. see datasheet no. [CC-420-121-00](#)
- included:** DT-10 = sealing plate with vulcanized O-ring (Viton FPM)